



ELECTRONIC COPY

LG768647270
Report verification at igi.org



February 3, 2026

IGI Report Number **LG768647270**

Description **LABORATORY GROWN DIAMOND**

Shape and Cutting Style **EMERALD CUT**

Measurements **9.67 X 7.02 X 4.78 MM**

GRADING RESULTS

Carat Weight **3.28 CARATS**

Color Grade **FANCY VIVID GREEN**

Clarity Grade **VVS 2**

LABORATORY GROWN DIAMOND REPORT

February 3, 2026

IGI Report Number **LG768647270**

Description **LABORATORY GROWN DIAMOND**

Shape and Cutting Style **EMERALD CUT**

Measurements **9.67 X 7.02 X 4.78 MM**

GRADING RESULTS

Carat Weight **3.28 CARATS**

Color Grade **FANCY VIVID GREEN**

Clarity Grade **VVS 2**

ADDITIONAL GRADING INFORMATION

Polish **VERY GOOD**

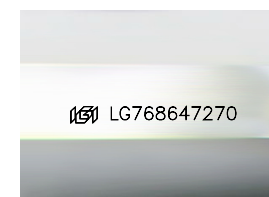
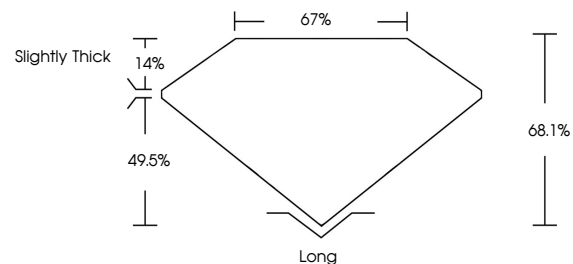
Symmetry **EXCELLENT**

Fluorescence **NONE**

Inscription(s) **IGI LG768647270**

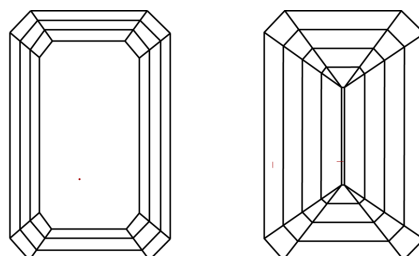
Comments: This Laboratory Grown Diamond was created by Chemical Vapor Deposition (CVD) growth process. Indications of post-growth treatment.

PROPORTIONS



Sample Image Used

CLARITY CHARACTERISTICS



KEY TO SYMBOLS

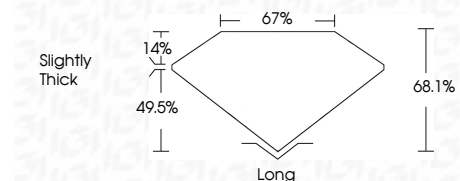
Red symbols indicate internal characteristics.
Green symbols indicate external characteristics.

COLOR

D E F G H I J Faint Very Light Light

CLARITY

FL	IF	VVS ¹⁻²	VS ¹⁻²	SI ¹⁻²	I ¹⁻³
Flawless	Internally Flawless	Very Very Slightly Included	Very Slightly Included	Slightly Included	Included



ADDITIONAL GRADING INFORMATION

Polish **VERY GOOD**

Symmetry **EXCELLENT**

Fluorescence **NONE**

Inscription(s) **IGI LG768647270**

Comments: This Laboratory Grown Diamond was created by Chemical Vapor Deposition (CVD) growth process. Indications of post-growth treatment.



February 3, 2026
IGI Report No LG768647270
EMERALD CUT

3.28 CARATS
Carat Weight
FANCY VIVID GREEN
Color Grade

VVS 2
Clarity Grade
68.1%
Depth
67%
Table
Slightly Thick
Girdle

Long
Culet
VERY GOOD
Polish
EXCELLENT
Symmetry
NONE
Fluorescence
Inscription(s)
IGI LG768647270

Comments: This Laboratory Grown Diamond was created by Chemical Vapor Deposition (CVD) growth process. Indications of post-growth treatment.