



ELECTRONIC COPY

LABORATORY GROWN DIAMOND REPORT

January 24, 2026 IGI Report Number LG768667015 Description LABORATORY GROWN DIAMOND Shape and Cutting Style CUT CORNERED RECTANGULAR MODIFIED BRILLIANT Measurements 10.38 X 7.15 X 4.76 MM

GRADING RESULTS

Carat Weight 3.07 CARATS Color Grade E Clarity Grade VS 1

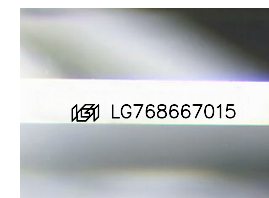
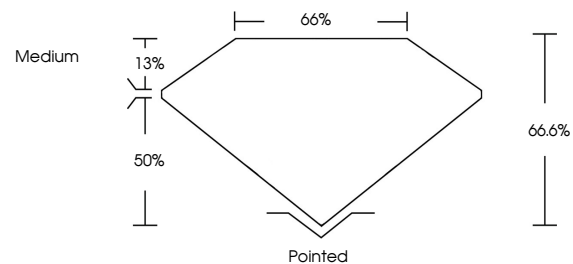
ADDITIONAL GRADING INFORMATION

Polish EXCELLENT Symmetry EXCELLENT Fluorescence NONE

Inscription(s) IGI LG768667015

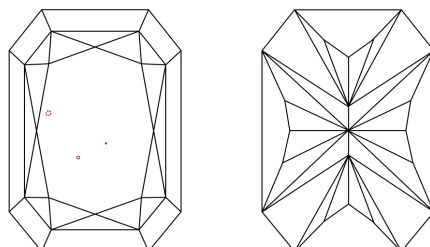
Comments: This Laboratory Grown Diamond was created by Chemical Vapor Deposition (CVD) growth process. Type IIa

PROPORTIONS



Sample Image Used

CLARITY CHARACTERISTICS



KEY TO SYMBOLS

Red symbols indicate internal characteristics. Green symbols indicate external characteristics.

COLOR

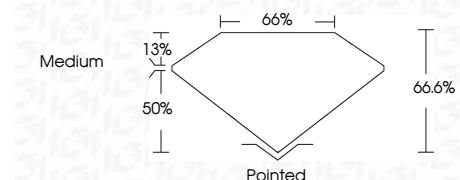
D E F G H I J Faint Very Light Light

CLARITY

FL IF VS 1-2 VS 2-2 SI 1-2 I 1-3 Flawless Internally Flawless Very Very Slightly Included Very Slightly Included Slightly Included Included



January 24, 2026 IGI Report Number LG768667015 Description LABORATORY GROWN DIAMOND Shape and Cutting Style CUT CORNERED RECTANGULAR MODIFIED BRILLIANT Measurements 10.38 X 7.15 X 4.76 MM GRADING RESULTS Carat Weight 3.07 CARATS Color Grade E Clarity Grade VS 1



ADDITIONAL GRADING INFORMATION

Polish EXCELLENT Symmetry EXCELLENT Fluorescence NONE Inscription(s) IGI LG768667015 Comments: This Laboratory Grown Diamond was created by Chemical Vapor Deposition (CVD) growth process. Type IIa



January 24, 2026 IGI Report No LG768667015 CUT CORNERED RECT. MODIFIED BRILLIANT 10.38 X 7.15 X 4.76 MM 3.07 CARATS E VS 1 66.6% 50% Medium Pointed EXCELLENT EXCELLENT NONE IGI LG768667015 Comments: This Laboratory Grown Diamond was created by Chemical Vapor Deposition (CVD) growth process. Type IIa