



ELECTRONIC COPY

LG768676937
Report verification at igi.org



February 9, 2026

IGI Report Number LG768676937

Description LABORATORY GROWN DIAMOND

Shape and Cutting Style ROUND BRILLIANT

Measurements 6.77 - 6.81 X 4.02 MM

GRADING RESULTS

Carat Weight 1.13 CARAT

Color Grade D

Clarity Grade VS 1

Cut Grade IDEAL

February 9, 2026
IGI Report Number LG768676937
Description LABORATORY GROWN DIAMOND
Shape and Cutting Style ROUND BRILLIANT
Measurements 6.77 - 6.81 X 4.02 MM

GRADING RESULTS

Carat Weight 1.13 CARAT

Color Grade D

Clarity Grade VS 1

Cut Grade IDEAL

ADDITIONAL GRADING INFORMATION

Polish VERY GOOD

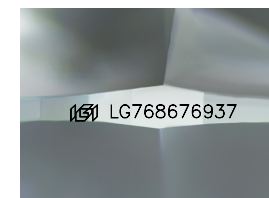
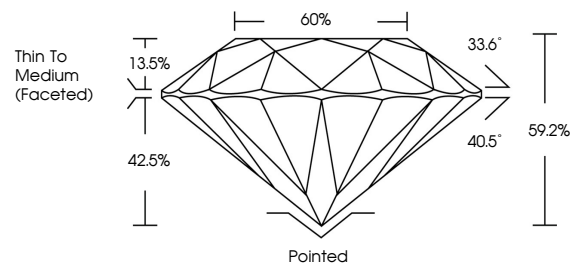
Symmetry VERY GOOD

Fluorescence NONE

Inscription(s) IGI LG768676937

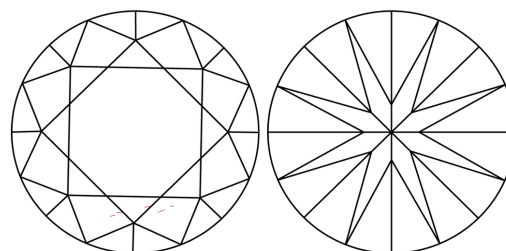
Comments: As Grown - No indication of post-growth treatment. This Laboratory Grown Diamond was created by High Pressure High Temperature (HPHT) growth process. Type II

PROPORTIONS



Sample Image Used

CLARITY CHARACTERISTICS



KEY TO SYMBOLS

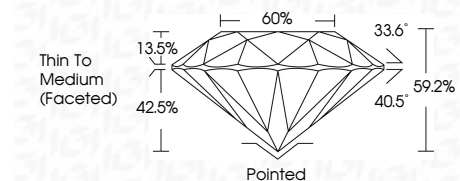
Red symbols indicate internal characteristics. Green symbols indicate external characteristics.

COLOR

D E F G H I J Faint Very Light Light

CLARITY

Table with columns: FL, IF, VS 1-2, VS 1-2, SI 1-2, I 1-3. Rows: Flawless, Internally Flawless, Very Very Slightly Included, Very Slightly Included, Slightly Included, Included



ADDITIONAL GRADING INFORMATION

Polish VERY GOOD

Symmetry VERY GOOD

Fluorescence NONE

Inscription(s) IGI LG768676937

Comments: As Grown - No indication of post-growth treatment. This Laboratory Grown Diamond was created by High Pressure High Temperature (HPHT) growth process. Type II



February 9, 2026
IGI Report No LG768676937
ROUND BRILLIANT
6.77 - 6.81 X 4.02 MM
1.13 CARAT
Color Grade D
Clarity Grade VS 1
Depth 59.2%
Table 60%
Girdle Thin To Medium (Faceted)
Culet Pointed
Polish VERY GOOD
Symmetry VERY GOOD
Fluorescence NONE
Inscription(s) IGI LG768676937
Comments: As Grown - No indication of post-growth treatment. This Laboratory Grown Diamond was created by High Pressure High Temperature (HPHT) growth process. Type II