



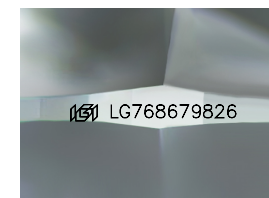
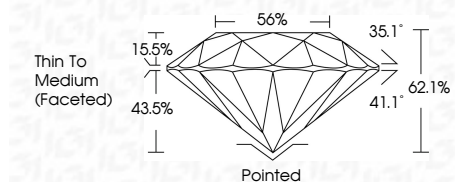
ELECTRONIC COPY

LG768679826 Report verification at igi.org



February 5, 2026 IGI Report Number LG768679826 Description LABORATORY GROWN DIAMOND Shape and Cutting Style ROUND BRILLIANT Measurements 8.11 - 8.15 X 5.05 MM

GRADING RESULTS Carat Weight 2.03 CARATS Color Grade D Clarity Grade VS 1 Cut Grade IDEAL



Sample Image Used

ADDITIONAL GRADING INFORMATION Polish EXCELLENT Symmetry EXCELLENT Fluorescence NONE Inscription(s) LG768679826 Comments: This Laboratory Grown Diamond was created by Chemical Vapor Deposition (CVD) growth process. Type IIa



February 5, 2026 IGI Report No LG768679826 ROUND BRILLIANT 8.11 - 8.15 X 5.05 MM 2.03 CARATS D VS 1 IDEAL 62.1% 56% Thin To Medium (Faceted) Pointed EXCELLENT EXCELLENT NONE NONE LG768679826

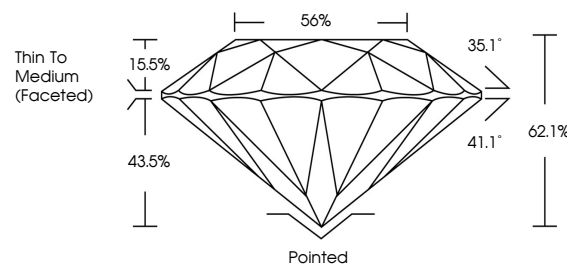
February 5, 2026 IGI Report Number LG768679826 Description LABORATORY GROWN DIAMOND Shape and Cutting Style ROUND BRILLIANT Measurements 8.11 - 8.15 X 5.05 MM

GRADING RESULTS Carat Weight 2.03 CARATS Color Grade D Clarity Grade VS 1 Cut Grade IDEAL

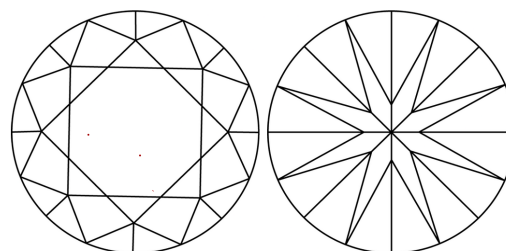
ADDITIONAL GRADING INFORMATION Polish EXCELLENT Symmetry EXCELLENT Fluorescence NONE Inscription(s) LG768679826

Comments: This Laboratory Grown Diamond was created by Chemical Vapor Deposition (CVD) growth process. Type IIa

PROPORTIONS



CLARITY CHARACTERISTICS



KEY TO SYMBOLS

Red symbols indicate internal characteristics. Green symbols indicate external characteristics.

COLOR

D E F G H I J Faint Very Light Light

CLARITY

FL IF VS 1-2 VS 2-3 SI 1-2 I 1-3 Flawless Internally Flawless Very Very Slightly Included Very Slightly Included Slightly Included Included

