



INTERNATIONAL GEMOLOGICAL INSTITUTE

ELECTRONIC COPY

LABORATORY GROWN DIAMOND REPORT

January 23, 2026
 IGI Report Number **LG769603088**
 Description **LABORATORY GROWN DIAMOND**
 Shape and Cutting Style **MARQUISE BRILLIANT**
 Measurements **7.77 X 4.02 X 2.51 MM**

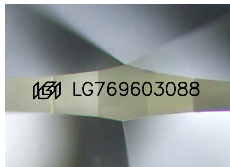
GRADING RESULTS

Carat Weight **0.45 CARAT**
 Color Grade **E**
 Clarity Grade **VVS 1**

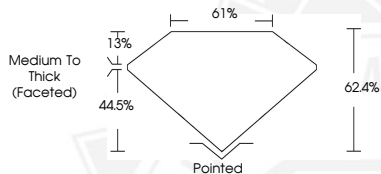
ADDITIONAL GRADING INFORMATION

Polish **EXCELLENT**
 Symmetry **EXCELLENT**
 Fluorescence **NONE**
 Inscription(s) **IGI LG769603088**

Comments: This Laboratory Grown Diamond was created by
 Chemical Vapor Deposition (CVD) growth process.
 Type IIa



Sample Image Used



January 23, 2026
 IGI Report Number **LG769603088**
MARQUISE BRILLIANT
LABORATORY GROWN DIAMOND
7.77 X 4.02 X 2.51 MM
0.45 CARAT
E
VVS 1
EXCELLENT
EXCELLENT
NONE
IGI LG769603088

Comments: This Laboratory Grown
 Diamond was created by
 Chemical Vapor Deposition (CVD)
 growth process. Type IIa



January 23, 2026
 IGI Report Number **LG769603088**
MARQUISE BRILLIANT
LABORATORY GROWN DIAMOND
7.77 X 4.02 X 2.51 MM
0.45 CARAT
E
VVS 1
EXCELLENT
EXCELLENT
NONE
IGI LG769603088

Comments: This Laboratory Grown
 Diamond was created by
 Chemical Vapor Deposition (CVD)
 growth process. Type IIa



THIS DOCUMENT WAS PRODUCED WITH THE FOLLOWING SECURITY MEASURES: SPECIAL DOCUMENT PAPER, INK SCREENS, WATERMARK, BACKGROUND DESIGNS, HOLOGRAM AND OTHER SECURITY FEATURES NOT LISTED AND DO EXCEED DOCUMENT SECURITY INDUSTRY GUIDELINES.

For terms & conditions and to verify this report, please visit www.igi.org