



**ELECTRONIC COPY**

LG769609541  
Report verification at igi.org



January 29, 2026  
IGI Report Number **LG769609541**  
Description **LABORATORY GROWN DIAMOND**  
Shape and Cutting Style **MODIFIED RECTANGULAR  
CUSHION MIXED CUT**  
Measurements **11.15 X 6.73 X 4.38 MM**  
**GRADING RESULTS**  
Carat Weight **3.07 CARATS**  
Color Grade **D**  
Clarity Grade **VVS 2**

**LABORATORY GROWN DIAMOND REPORT**

January 29, 2026  
IGI Report Number **LG769609541**  
Description **LABORATORY GROWN DIAMOND**  
Shape and Cutting Style **MODIFIED RECTANGULAR  
CUSHION MIXED CUT**  
Measurements **11.15 X 6.73 X 4.38 MM**

**GRADING RESULTS**

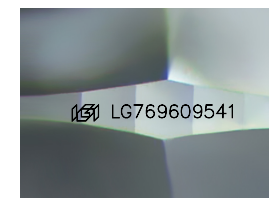
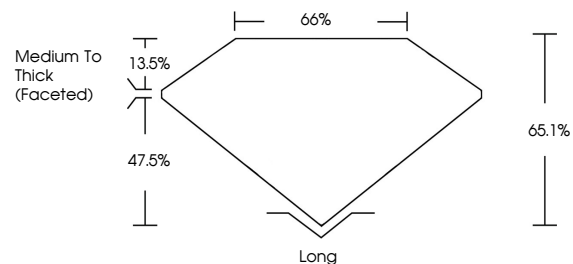
Carat Weight **3.07 CARATS**  
Color Grade **D**  
Clarity Grade **VVS 2**

**ADDITIONAL GRADING INFORMATION**

Polish **EXCELLENT**  
Symmetry **EXCELLENT**  
Fluorescence **NONE**  
Inscription(s) **IGI LG769609541**

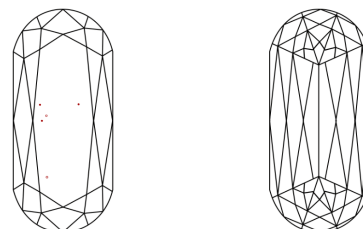
Comments: This Laboratory Grown Diamond was created by Chemical Vapor Deposition (CVD) growth process.  
Type IIa

**PROPORTIONS**



Sample Image Used

**CLARITY CHARACTERISTICS**



**KEY TO SYMBOLS**

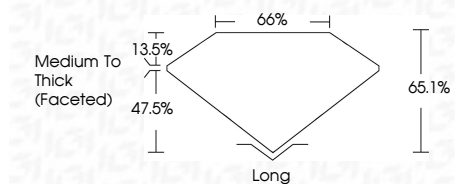
Red symbols indicate internal characteristics.  
Green symbols indicate external characteristics.

**COLOR**

D E F G H I J Faint Very Light Light

**CLARITY**

FL	IF	VVS <sup>1-2</sup>	VS <sup>1-2</sup>	SI <sup>1-2</sup>	I <sup>1-3</sup>
Flawless	Internally Flawless	Very Very Slightly Included	Very Slightly Included	Slightly Included	Included



**ADDITIONAL GRADING INFORMATION**

Polish **EXCELLENT**  
Symmetry **EXCELLENT**  
Fluorescence **NONE**  
Inscription(s) **IGI LG769609541**  
Comments: This Laboratory Grown Diamond was created by Chemical Vapor Deposition (CVD) growth process.  
Type IIa



January 29, 2026  
IGI Report No **LG769609541**  
**MODIFIED RECTANGULAR CUSHION MIXED CUT**  
**11.15 X 6.73 X 4.38 MM**  
Carat Weight **3.07 CARATS**  
Color Grade **D**  
Clarity Grade **VVS 2**  
Depth **65.1%**  
Table **65%**  
Girdle **Medium To Thick (Faceted)**  
Culet **Long**  
Polish **EXCELLENT**  
Symmetry **EXCELLENT**  
Fluorescence **NONE**  
Inscription(s) **IGI LG769609541**  
Comments: This Laboratory Grown Diamond was created by Chemical Vapor Deposition (CVD) growth process.  
Type IIa