



# INTERNATIONAL GEMOLOGICAL INSTITUTE

ELECTRONIC COPY

## LABORATORY GROWN DIAMOND REPORT

January 28, 2026  
IGI Report Number **LG769619661**  
Description **LABORATORY GROWN DIAMOND**  
Shape and Cutting Style **ROUND BRILLIANT**  
Measurements **5.81 - 5.85 X 3.60 MM**

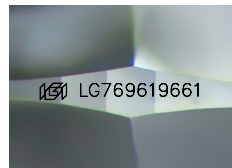
### GRADING RESULTS

Carat Weight **0.75 CARAT**  
Color Grade **D**  
Clarity Grade **VS 2**  
Cut Grade **IDEAL**

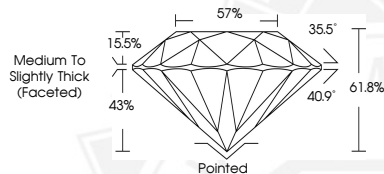
### ADDITIONAL GRADING INFORMATION

Polish **EXCELLENT**  
Symmetry **EXCELLENT**  
Fluorescence **NONE**  
Inscription(s) **IGI LG769619661**

Comments: As Grown - No indication of post-growth treatment. This Laboratory Grown Diamond was created by High Pressure High Temperature (HPHT) growth process. Type II



Sample Image Used



January 28, 2026  
IGI Report Number **LG769619661**  
**ROUND BRILLIANT**  
**LABORATORY GROWN DIAMOND**  
**5.81 - 5.85 X 3.60 MM**  
Carat Weight **0.75 CARAT**  
Color Grade **D**  
Clarity Grade **VS 2**  
Cut Grade **IDEAL**  
Polish **EXCELLENT**  
Symmetry **EXCELLENT**  
Fluorescence **NONE**  
Inscription(s) **IGI LG769619661**

Comments: As Grown - No indication of post-growth treatment. This Laboratory Grown Diamond was created by High Pressure High Temperature (HPHT) growth process. Type II



January 28, 2026  
IGI Report Number **LG769619661**  
**ROUND BRILLIANT**  
**LABORATORY GROWN DIAMOND**  
**5.81 - 5.85 X 3.60 MM**  
Carat Weight **0.75 CARAT**  
Color Grade **D**  
Clarity Grade **VS 2**  
Cut Grade **IDEAL**  
Polish **EXCELLENT**  
Symmetry **EXCELLENT**  
Fluorescence **NONE**  
Inscription(s) **IGI LG769619661**

Comments: As Grown - No indication of post-growth treatment. This Laboratory Grown Diamond was created by High Pressure High Temperature (HPHT) growth process. Type II



THIS DOCUMENT WAS PRODUCED WITH THE FOLLOWING SECURITY MEASURES: SPECIAL DOCUMENT PAPER, INK SCREENS, WATERMARK, BACKGROUND DESIGNS, HOLOGRAM AND OTHER SECURITY FEATURES NOT LISTED AND DO EXCEED DOCUMENT SECURITY INDUSTRY GUIDELINES.

For terms & conditions and to verify this report, please visit [www.igi.org](http://www.igi.org)