



# INTERNATIONAL GEMOLOGICAL INSTITUTE

ELECTRONIC COPY

## LABORATORY GROWN DIAMOND REPORT

January 28, 2026

IGI Report Number

LG769619731

Description

LABORATORY GROWN DIAMOND

Shape and Cutting Style

ROUND BRILLIANT

Measurements

5.80 - 5.82 X 3.59 MM

### GRADING RESULTS

Carat Weight

0.75 CARAT

Color Grade

D

Clarity Grade

VS 1

Cut Grade

EXCELLENT

### ADDITIONAL GRADING INFORMATION

Polish

EXCELLENT

Symmetry

EXCELLENT

Fluorescence

NONE

Inscription(s)

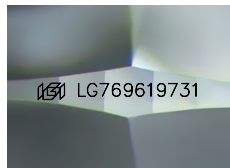
IGI LG769619731

Comments: As Grown - No indication of post-growth treatment.

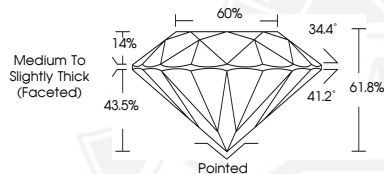
This Laboratory Grown Diamond was created by High Pressure High

Temperature (HPHT) growth process.

Type II



Sample Image Used



January 28, 2026

IGI Report Number LG769619731

ROUND BRILLIANT

LABORATORY GROWN DIAMOND

5.80 - 5.82 X 3.59 MM

Carat Weight 0.75 CARAT

Color Grade D

Clarity Grade VS 1

Cut Grade EXCELLENT

Polish EXCELLENT

Symmetry EXCELLENT

Fluorescence NONE

Inscription(s) IGI LG769619731

Comments: As Grown - No

indication of post-growth

treatment. This Laboratory Grown

Diamond was created by High

Pressure High Temperature (HPHT)

growth process. Type II



January 28, 2026

IGI Report Number LG769619731

ROUND BRILLIANT

LABORATORY GROWN DIAMOND

5.80 - 5.82 X 3.59 MM

Carat Weight 0.75 CARAT

Color Grade D

Clarity Grade VS 1

Cut Grade EXCELLENT

Polish EXCELLENT

Symmetry EXCELLENT

Fluorescence NONE

Inscription(s) IGI LG769619731

Comments: As Grown - No

indication of post-growth

treatment. This Laboratory Grown

Diamond was created by High

Pressure High Temperature (HPHT)

growth process. Type II



THIS DOCUMENT WAS PRODUCED WITH THE FOLLOWING SECURITY MEASURES: SPECIAL DOCUMENT PAPER, INK SCREENS, WATERMARK, BACKGROUND DESIGNS, HOLOGRAM AND OTHER SECURITY FEATURES NOT LISTED AND DO EXCEED DOCUMENT SECURITY INDUSTRY GUIDELINES.

For terms & conditions and to verify this report, please visit [www.igi.org](http://www.igi.org)