



ELECTRONIC COPY

LG769622934
Report verification at igi.org



January 31, 2026

IGI Report Number **LG769622934**

Description **LABORATORY GROWN DIAMOND**

Shape and Cutting Style **OVAL MODIFIED BRILLIANT**

Measurements **9.07 X 6.30 X 4.45 MM**

GRADING RESULTS

Carat Weight **2.04 CARATS**

Color Grade **FANCY INTENSE YELLOW**

Clarity Grade **VS 1**

January 31, 2026

IGI Report Number **LG769622934**

Description **LABORATORY GROWN DIAMOND**

Shape and Cutting Style **OVAL MODIFIED BRILLIANT**

Measurements **9.07 X 6.30 X 4.45 MM**

GRADING RESULTS

Carat Weight **2.04 CARATS**

Color Grade **FANCY INTENSE YELLOW**

Clarity Grade **VS 1**

ADDITIONAL GRADING INFORMATION

Polish **EXCELLENT**

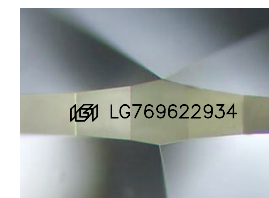
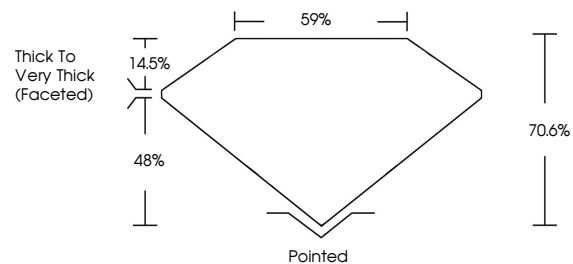
Symmetry **EXCELLENT**

Fluorescence **NONE**

Inscription(s) **IGI LG769622934**

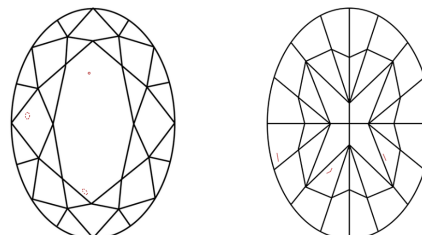
Comments: This Laboratory Grown Diamond was created by Chemical Vapor Deposition (CVD) growth process.

PROPORTIONS



Sample Image Used

CLARITY CHARACTERISTICS



KEY TO SYMBOLS

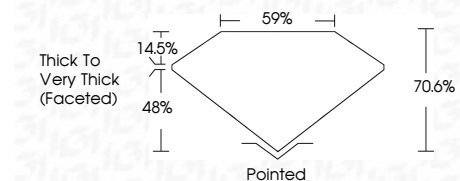
Red symbols indicate internal characteristics.
Green symbols indicate external characteristics.

COLOR

D E F G H I J Faint Very Light Light

CLARITY

FL	IF	VS ¹⁻²	VS ¹⁻²	SI ¹⁻²	I ¹⁻³
Flawless	Internally Flawless	Very Very Slightly Included	Very Slightly Included	Slightly Included	Included



ADDITIONAL GRADING INFORMATION

Polish **EXCELLENT**

Symmetry **EXCELLENT**

Fluorescence **NONE**

Inscription(s) **IGI LG769622934**

Comments: This Laboratory Grown Diamond was created by Chemical Vapor Deposition (CVD) growth process.



January 31, 2026
IGI Report No LG769622934
OVAL MODIFIED BRILLIANT
9.07 X 6.30 X 4.45 MM
2.04 CARATS
FANCY INTENSE YELLOW
VS 1
70.6%
48%
14.5%
Thick to Very Thick (Faceted)
Pointed
EXCELLENT
EXCELLENT
NONE
IGI LG769622934

Comments: This Laboratory Grown Diamond was created by Chemical Vapor Deposition (CVD) growth process.