



ELECTRONIC COPY

LG769628943
Report verification at igi.org



January 27, 2026

IGI Report Number **LG769628943**

Description **LABORATORY GROWN DIAMOND**

Shape and Cutting Style **PRINCESS CUT**

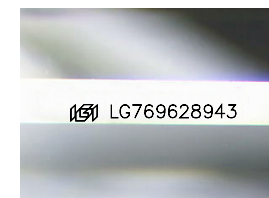
Measurements **8.87 X 8.62 X 6.36 MM**

GRADING RESULTS

Carat Weight **4.31 CARATS**

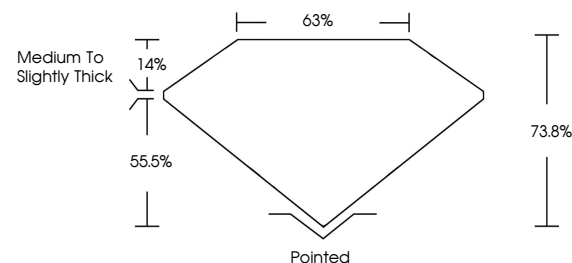
Color Grade **D**

Clarity Grade **VVS 1**

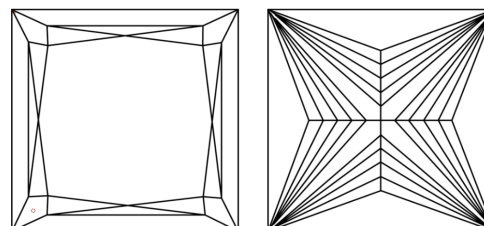


Sample Image Used

PROPORTIONS



CLARITY CHARACTERISTICS



KEY TO SYMBOLS

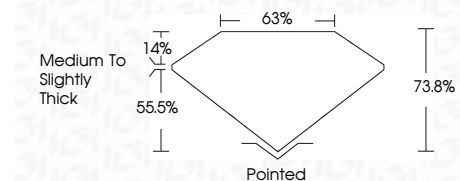
Red symbols indicate internal characteristics.
Green symbols indicate external characteristics.

COLOR

D E F G H I J Faint Very Light Light

CLARITY

FL	IF	VVS ¹⁻²	VS ¹⁻²	SI ¹⁻²	I ¹⁻³
Flawless	Internally Flawless	Very Very Slightly Included	Very Slightly Included	Slightly Included	Included



ADDITIONAL GRADING INFORMATION

Polish **EXCELLENT**

Symmetry **EXCELLENT**

Fluorescence **NONE**

Inscription(s) **IGI LG769628943**

Comments: As Grown - No indication of post-growth treatment.

This Laboratory Grown Diamond was created by High Pressure High Temperature (HPHT) growth process. Type II



IGI



January 27, 2026
IGI Report No. LG769628943
PRINCESS CUT

8.87 X 8.62 X 6.36 MM
4.31 CARATS
D
VVS 1
73.8%
63%
Medium to Slightly Thick
Pointed
EXCELLENT
EXCELLENT
NONE
IGI LG769628943

Comments: As Grown - No indication of post-growth treatment. This Laboratory Grown Diamond was created by High Pressure High Temperature (HPHT) growth process. Type II