



**ELECTRONIC COPY**

LG769641649  
Report verification at igi.org



February 5, 2026

IGI Report Number **LG769641649**

Description **LABORATORY GROWN DIAMOND**

Shape and Cutting Style **PRINCESS CUT**

Measurements **6.23 X 6.22 X 4.44 MM**

**GRADING RESULTS**

Carat Weight **1.53 CARAT**

Color Grade **E**

Clarity Grade **VS 1**

February 5, 2026

IGI Report Number **LG769641649**

Description **LABORATORY GROWN DIAMOND**

Shape and Cutting Style **PRINCESS CUT**

Measurements **6.23 X 6.22 X 4.44 MM**

**GRADING RESULTS**

Carat Weight **1.53 CARAT**

Color Grade **E**

Clarity Grade **VS 1**

**ADDITIONAL GRADING INFORMATION**

Polish **EXCELLENT**

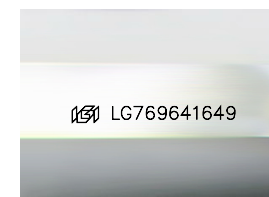
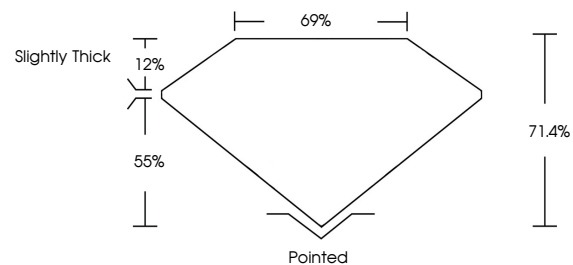
Symmetry **EXCELLENT**

Fluorescence **NONE**

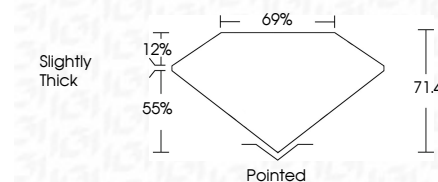
Inscription(s) **IGI LG769641649**

Comments: This Laboratory Grown Diamond was created by Chemical Vapor Deposition (CVD) growth process.  
Type IIa

**PROPORTIONS**



Sample Image Used



**COLOR**

D E F G H I J Faint Very Light Light

**CLARITY**

FL	IF	VS <sup>1-2</sup>	VS <sup>1-2</sup>	SI <sup>1-2</sup>	I <sup>1-3</sup>
Flawless	Internally Flawless	Very Very Slightly Included	Very Slightly Included	Slightly Included	Included

**ADDITIONAL GRADING INFORMATION**

Polish **EXCELLENT**

Symmetry **EXCELLENT**

Fluorescence **NONE**

Inscription(s) **IGI LG769641649**

Comments: This Laboratory Grown Diamond was created by Chemical Vapor Deposition (CVD) growth process.  
Type IIa



February 5, 2026  
IGI Report No. LG769641649  
PRINCESS CUT

1.53 CARAT  
E

6.23 X 6.22 X 4.44 MM

Carat Weight  
Color Grade  
Clarity Grade  
Table  
Depth  
Girdle  
Girdle

12%  
55%  
69%  
71.4%

Slightly Thick

Pointed  
EXCELLENT  
EXCELLENT  
NONE  
IGI LG769641649

Culet  
Polish  
Symmetry  
Fluorescence  
Inscription(s)

Comments: This Laboratory Grown Diamond was created by Chemical Vapor Deposition (CVD) growth process.  
Type IIa