



**ELECTRONIC COPY**

LG769656471  
Report verification at igi.org



January 30, 2026

IGI Report Number **LG769656471**

Description **LABORATORY GROWN DIAMOND**

Shape and Cutting Style **PEAR BRILLIANT**

Measurements **11.84 X 7.30 X 4.39 MM**

**GRADING RESULTS**

Carat Weight **2.30 CARATS**

Color Grade **D**

Clarity Grade **VVS 2**

January 30, 2026  
IGI Report Number **LG769656471**  
Description **LABORATORY GROWN DIAMOND**  
Shape and Cutting Style **PEAR BRILLIANT**  
Measurements **11.84 X 7.30 X 4.39 MM**

**GRADING RESULTS**

Carat Weight **2.30 CARATS**

Color Grade **D**

Clarity Grade **VVS 2**

**ADDITIONAL GRADING INFORMATION**

Polish **EXCELLENT**

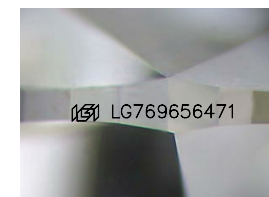
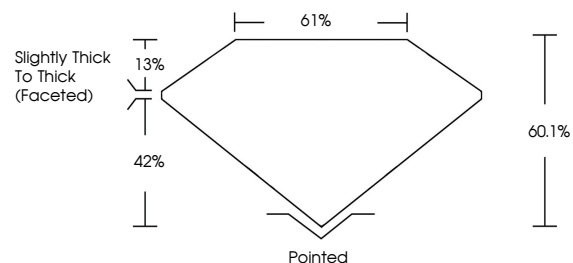
Symmetry **EXCELLENT**

Fluorescence **NONE**

Inscription(s) **IGI LG769656471**

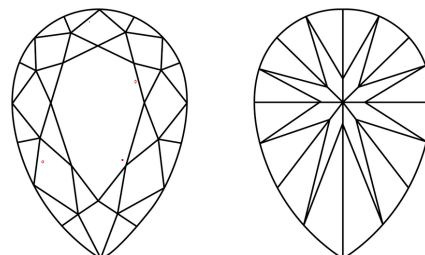
Comments: This Laboratory Grown Diamond was created by Chemical Vapor Deposition (CVD) growth process. Type IIa

**PROPORTIONS**



Sample Image Used

**CLARITY CHARACTERISTICS**



**KEY TO SYMBOLS**

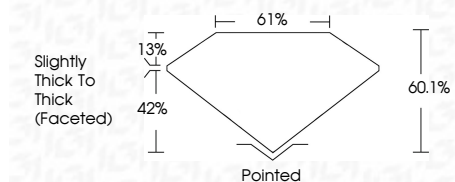
Red symbols indicate internal characteristics.  
Green symbols indicate external characteristics.

**COLOR**

D E F G H I J Faint Very Light Light

**CLARITY**

FL	IF	VVS <sup>1-2</sup>	VS <sup>1-2</sup>	SI <sup>1-2</sup>	I <sup>1-3</sup>
Flawless	Internally Flawless	Very Very Slightly Included	Very Slightly Included	Slightly Included	Included



**ADDITIONAL GRADING INFORMATION**

Polish **EXCELLENT**

Symmetry **EXCELLENT**

Fluorescence **NONE**

Inscription(s) **IGI LG769656471**

Comments: This Laboratory Grown Diamond was created by Chemical Vapor Deposition (CVD) growth process. Type IIa



**IGI**



January 30, 2026  
IGI Report No LG769656471  
PEAR BRILLIANT

11.84 X 7.30 X 4.39 MM

2.30 CARATS  
D

VVS 2  
60.1%  
61%

Slightly Thick To Thick (Faceted)

Pointed  
EXCELLENT  
EXCELLENT  
NONE  
IGI LG769656471

Comments: This Laboratory Grown Diamond was created by Chemical Vapor Deposition (CVD) growth process. Type IIa