



January 30, 2026

IGI Report Number **LG769657115**

**PRINCESS CUT
LABORATORY GROWN DIAMOND
4.89 X 4.86 X 3.39 MM**

Carat Weight **0.73 CARAT**
Color Grade **E**
Clarity Grade **VVS 2**
Polish **VERY GOOD**
Symmetry **EXCELLENT**
Fluorescence **NONE**
Inscription(s) **IGI LG769657115**

Comments: This Laboratory Grown Diamond was created by Chemical Vapor Deposition (CVD) growth process. Type IIa

LABORATORY GROWN DIAMOND REPORT

January 30, 2026
IGI Report Number **LG769657115**
Description **LABORATORY GROWN DIAMOND**
Shape and Cutting Style **PRINCESS CUT**
Measurements **4.89 X 4.86 X 3.39 MM**

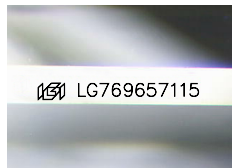
GRADING RESULTS

Carat Weight **0.73 CARAT**
Color Grade **E**
Clarity Grade **VVS 2**

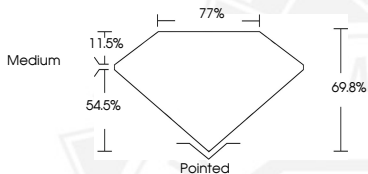
ADDITIONAL GRADING INFORMATION

Polish **VERY GOOD**
Symmetry **EXCELLENT**
Fluorescence **NONE**
Inscription(s) **IGI LG769657115**

Comments: This Laboratory Grown Diamond was created by Chemical Vapor Deposition (CVD) growth process.
Type IIa



Sample Image Used



January 30, 2026

IGI Report Number **LG769657115**

**PRINCESS CUT
LABORATORY GROWN DIAMOND
4.89 X 4.86 X 3.39 MM**

Carat Weight **0.73 CARAT**
Color Grade **E**
Clarity Grade **VVS 2**
Polish **VERY GOOD**
Symmetry **EXCELLENT**
Fluorescence **NONE**
Inscription(s) **IGI LG769657115**

Comments: This Laboratory Grown Diamond was created by Chemical Vapor Deposition (CVD) growth process. Type IIa



THIS DOCUMENT WAS PRODUCED WITH THE FOLLOWING SECURITY MEASURES: SPECIAL DOCUMENT PAPER, INK SCREENS, WATERMARK, BACKGROUND DESIGNS, HOLOGRAM AND OTHER SECURITY FEATURES NOT LISTED AND DO EXCEED DOCUMENT SECURITY INDUSTRY GUIDELINES.