



ELECTRONIC COPY

LG769658753
Report verification at igi.org



January 28, 2026
IGI Report Number **LG769658753**
Description **LABORATORY GROWN DIAMOND**
Shape and Cutting Style **CUT CORNERED
RECTANGULAR MODIFIED
BRILLIANT**
Measurements **10.59 X 7.01 X 4.69 MM**
GRADING RESULTS
Carat Weight **3.07 CARATS**
Color Grade **D**
Clarity Grade **VS 1**

January 28, 2026
IGI Report Number **LG769658753**
Description **LABORATORY GROWN DIAMOND**
Shape and Cutting Style **CUT CORNERED RECTANGULAR
MODIFIED BRILLIANT**
Measurements **10.59 X 7.01 X 4.69 MM**

GRADING RESULTS

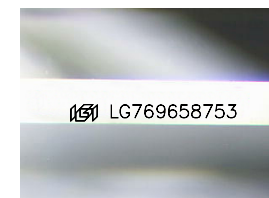
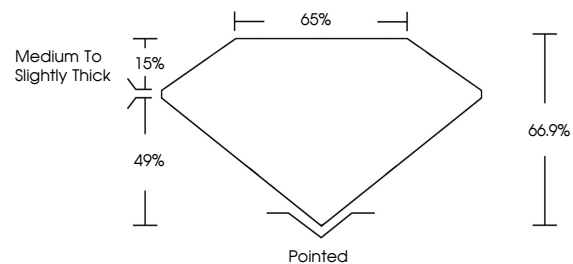
Carat Weight **3.07 CARATS**
Color Grade **D**
Clarity Grade **VS 1**

ADDITIONAL GRADING INFORMATION

Polish **EXCELLENT**
Symmetry **EXCELLENT**
Fluorescence **NONE**
Inscription(s) **IGI LG769658753**

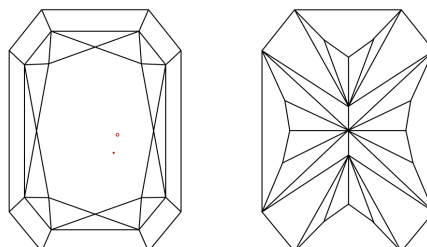
Comments: This Laboratory Grown Diamond was created by Chemical Vapor Deposition (CVD) growth process. Type IIa

PROPORTIONS



Sample Image Used

CLARITY CHARACTERISTICS



KEY TO SYMBOLS

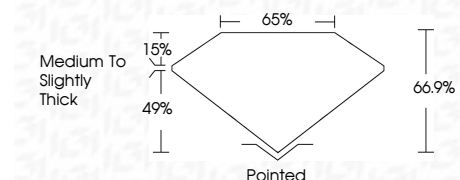
Red symbols indicate internal characteristics.
Green symbols indicate external characteristics.

COLOR

D E F G H I J Faint Very Light Light

CLARITY

FL	IF	VS ¹⁻²	VS ¹⁻²	SI ¹⁻²	I ¹⁻³
Flawless	Internally Flawless	Very Very Slightly Included	Very Slightly Included	Slightly Included	Included



ADDITIONAL GRADING INFORMATION

Polish **EXCELLENT**
Symmetry **EXCELLENT**
Fluorescence **NONE**
Inscription(s) **IGI LG769658753**
Comments: This Laboratory Grown Diamond was created by Chemical Vapor Deposition (CVD) growth process. Type IIa



IGI



January 28, 2026
IGI Report No **LG769658753**
CUT CORNERED RECT. MODIFIED BRILLIANT
3.07 CARATS
D
VS 1
66.9%
65%
Medium to Slightly Thick
Pointed
EXCELLENT
EXCELLENT
NONE
IGI LG769658753

Comments: This Laboratory Grown Diamond was created by Chemical Vapor Deposition (CVD) growth process. Type IIa