



ELECTRONIC COPY

LG769663426
Report verification at igi.org



February 6, 2026

IGI Report Number **LG769663426**

Description **LABORATORY GROWN DIAMOND**

Shape and Cutting Style **ROUND BRILLIANT**

Measurements **8.03 - 8.08 X 4.98 MM**

GRADING RESULTS

Carat Weight **2.00 CARATS**

Color Grade **D**

Clarity Grade **VS 1**

Cut Grade **EXCELLENT**

February 6, 2026
IGI Report Number **LG769663426**
Description **LABORATORY GROWN DIAMOND**
Shape and Cutting Style **ROUND BRILLIANT**
Measurements **8.03 - 8.08 X 4.98 MM**

GRADING RESULTS

Carat Weight **2.00 CARATS**

Color Grade **D**

Clarity Grade **VS 1**

Cut Grade **EXCELLENT**

ADDITIONAL GRADING INFORMATION

Polish **EXCELLENT**

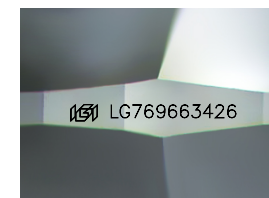
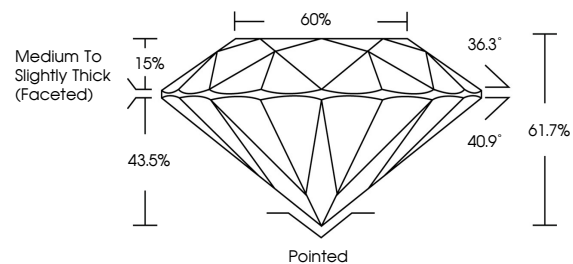
Symmetry **EXCELLENT**

Fluorescence **NONE**

Inscription(s) **LG769663426**

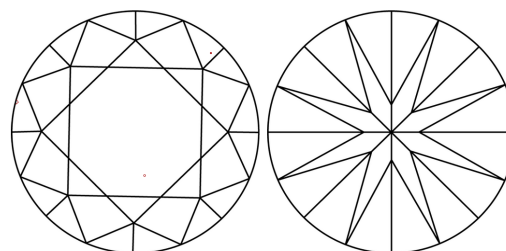
Comments: This Laboratory Grown Diamond was created by Chemical Vapor Deposition (CVD) growth process.
Type IIa

PROPORTIONS



Sample Image Used

CLARITY CHARACTERISTICS



KEY TO SYMBOLS

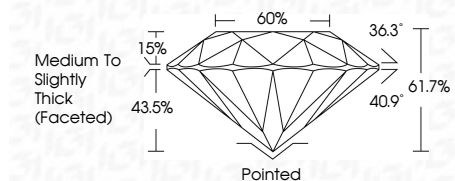
Red symbols indicate internal characteristics.
Green symbols indicate external characteristics.

COLOR

D E F G H I J Faint Very Light Light

CLARITY

FL	IF	VS ¹⁻²	VS ¹⁻²	SI ¹⁻²	I ¹⁻³
Flawless	Internally Flawless	Very Very Slightly Included	Very Slightly Included	Slightly Included	Included



ADDITIONAL GRADING INFORMATION

Polish **EXCELLENT**

Symmetry **EXCELLENT**

Fluorescence **NONE**

Inscription(s) **LG769663426**

Comments: This Laboratory Grown Diamond was created by Chemical Vapor Deposition (CVD) growth process.
Type IIa



February 6, 2026	IGI Report No LG769663426	2.00 CARATS	D
8.03 - 8.08 X 4.98 MM	ROUND BRILLIANT	VS 1	EXCELLENT
Carat Weight	Color Grade	Depth	61.7%
Color Grade	Clarity Grade	Table	60%
Clarity Grade	Cut Grade	Grille	Medium To Slightly Thick (Faceted)
Depth	Polish	Culet	Pointed
Table	Symmetry	Fluorescence	EXCELLENT
Grille	Inscription(s)	Inscription(s)	EXCELLENT
Culet	Comments: This Laboratory Grown Diamond was created by Chemical Vapor Deposition (CVD) growth process.	Inscription(s)	NONE
Polish			None
Symmetry			None
Fluorescence			None
Inscription(s)			None