



ELECTRONIC COPY

LG769663839 Report verification at igi.org



January 30, 2026 IGI Report Number LG769663839 Description LABORATORY GROWN DIAMOND Shape and Cutting Style CUT CORNERED RECTANGULAR MODIFIED BRILLIANT Measurements 11.29 X 7.93 X 5.29 MM GRADING RESULTS Carat Weight 4.07 CARATS Color Grade E Clarity Grade VS 1

LABORATORY GROWN DIAMOND REPORT

January 30, 2026 IGI Report Number LG769663839 Description LABORATORY GROWN DIAMOND Shape and Cutting Style CUT CORNERED RECTANGULAR MODIFIED BRILLIANT Measurements 11.29 X 7.93 X 5.29 MM

GRADING RESULTS

Carat Weight 4.07 CARATS Color Grade E Clarity Grade VS 1

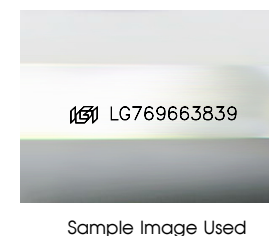
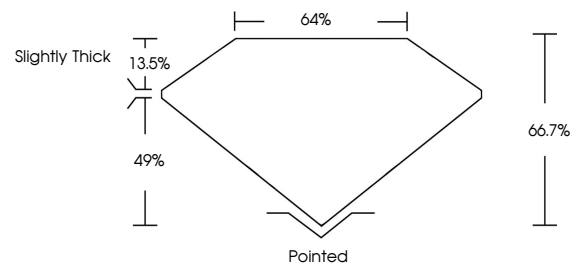
ADDITIONAL GRADING INFORMATION

Polish EXCELLENT Symmetry EXCELLENT Fluorescence NONE

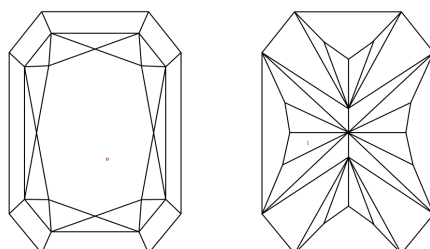
Inscription(s) IGI LG769663839

Comments: This Laboratory Grown Diamond was created by Chemical Vapor Deposition (CVD) growth process. Type IIa

PROPORTIONS



CLARITY CHARACTERISTICS



KEY TO SYMBOLS

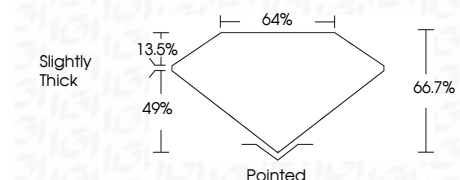
Red symbols indicate internal characteristics. Green symbols indicate external characteristics.

COLOR

D E F G H I J Faint Very Light Light

CLARITY

FL IF VS 1-2 VS 2-3 SI 1-2 I 1-3 Flawless Internally Flawless Very Very Slightly Included Very Slightly Included Slightly Included Included



ADDITIONAL GRADING INFORMATION

Polish EXCELLENT Symmetry EXCELLENT Fluorescence NONE Inscription(s) IGI LG769663839 Comments: This Laboratory Grown Diamond was created by Chemical Vapor Deposition (CVD) growth process. Type IIa



January 30, 2026 IGI Report No LG769663839 CUT CORNERED RECT. MODIFIED BRILLIANT 4.07 CARATS E VS 1 66.7% 49% Slightly Thick Pointed EXCELLENT EXCELLENT NONE IGI LG769663839 Comments: This Laboratory Grown Diamond was created by Chemical Vapor Deposition (CVD) growth process. Type IIa