



ELECTRONIC COPY

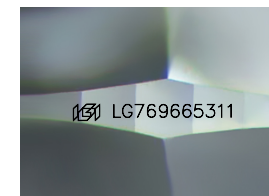
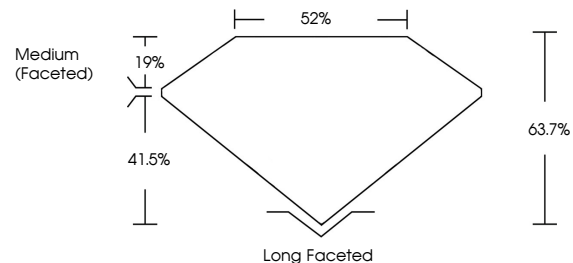
LG769665311
Report verification at igi.org



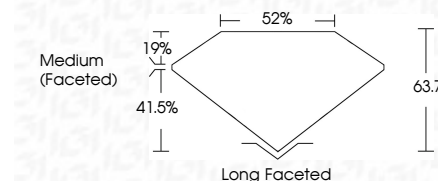
February 3, 2026
IGI Report Number **LG769665311**
Description **LABORATORY GROWN DIAMOND**
Shape and Cutting Style **CUSHION MODIFIED BRILLIANT**
Measurements **11.87 X 8.92 X 5.68 MM**
GRADING RESULTS
Carat Weight **4.45 CARATS**
Color Grade **E**
Clarity Grade **VVS 2**

February 3, 2026
IGI Report Number **LG769665311**
Description **LABORATORY GROWN DIAMOND**
Shape and Cutting Style **CUSHION MODIFIED BRILLIANT**
Measurements **11.87 X 8.92 X 5.68 MM**
GRADING RESULTS
Carat Weight **4.45 CARATS**
Color Grade **E**
Clarity Grade **VVS 2**

PROPORTIONS



Sample Image Used



ADDITIONAL GRADING INFORMATION

Polish **EXCELLENT**
Symmetry **EXCELLENT**
Fluorescence **NONE**
Inscription(s) **IGI LG769665311**

Comments: This Laboratory Grown Diamond was created by Chemical Vapor Deposition (CVD) growth process. Type IIa

ADDITIONAL GRADING INFORMATION

Polish **EXCELLENT**
Symmetry **EXCELLENT**
Fluorescence **NONE**
Inscription(s) **IGI LG769665311**
Comments: This Laboratory Grown Diamond was created by Chemical Vapor Deposition (CVD) growth process. Type IIa

COLOR

D E F G H I J Faint Very Light Light

CLARITY

FL	IF	VVS ¹⁻²	VS ¹⁻²	SI ¹⁻²	I ¹⁻³
Flawless	Internally Flawless	Very Very Slightly Included	Very Slightly Included	Slightly Included	Included



IGI



February 3, 2026
IGI Report No **LG769665311**
CUSHION MODIFIED BRILLIANT
4.45 CARATS
E
VVS 2
63.7%
52%
Medium (Faceted)
Long Faceted
EXCELLENT
EXCELLENT
NONE
IGI LG769665311
Comments: This Laboratory Grown Diamond was created by Chemical Vapor Deposition (CVD) growth process. Type IIa