



**ELECTRONIC COPY**

LG769665441  
Report verification at igi.org



February 5, 2026

IGI Report Number **LG769665441**

Description **LABORATORY GROWN DIAMOND**

Shape and Cutting Style **CUT CORNERED  
RECTANGULAR MODIFIED  
BRILLIANT**

Measurements **7.73 X 5.35 X 3.35 MM**

**GRADING RESULTS**

Carat Weight **1.41 CARAT**

Color Grade **FANCY VIVID GREEN**

Clarity Grade **VS 1**

**LABORATORY GROWN DIAMOND REPORT**

February 5, 2026

IGI Report Number **LG769665441**

Description **LABORATORY GROWN DIAMOND**

Shape and Cutting Style **CUT CORNERED RECTANGULAR  
MODIFIED BRILLIANT**

Measurements **7.73 X 5.35 X 3.35 MM**

**GRADING RESULTS**

Carat Weight **1.41 CARAT**

Color Grade **FANCY VIVID GREEN**

Clarity Grade **VS 1**

**ADDITIONAL GRADING INFORMATION**

Polish **VERY GOOD**

Symmetry **VERY GOOD**

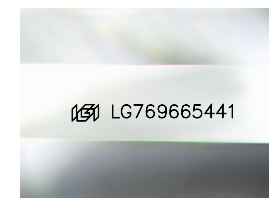
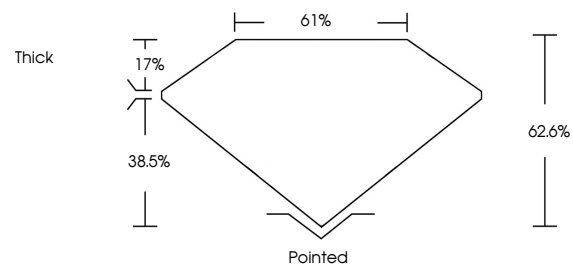
Fluorescence **NONE**

Inscription(s) **IGI LG769665441**

Comments: This Laboratory Grown Diamond was created by Chemical Vapor Deposition (CVD) growth process.

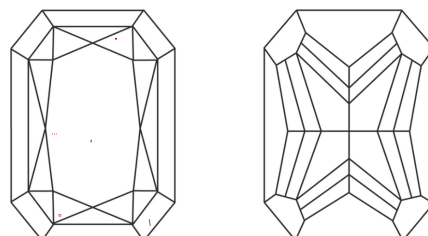
Indications of post-growth treatment.

**PROPORTIONS**



Sample Image Used

**CLARITY CHARACTERISTICS**



**KEY TO SYMBOLS**

Red symbols indicate internal characteristics.  
Green symbols indicate external characteristics.

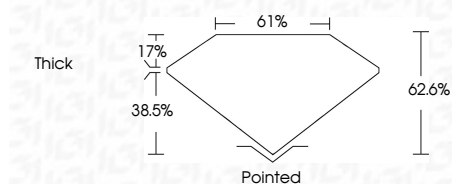
**COLOR**

D E F G H I J Faint Very Light Light

**CLARITY**

FL IF VS<sup>1-2</sup> VS<sup>1-2</sup> SI<sup>1-2</sup> I<sup>1-3</sup>

Flawless Internally Flawless Very Very Slightly Included Very Slightly Included Slightly Included Included



**ADDITIONAL GRADING INFORMATION**

Polish **VERY GOOD**

Symmetry **VERY GOOD**

Fluorescence **NONE**

Inscription(s) **IGI LG769665441**

Comments: This Laboratory Grown Diamond was created by Chemical Vapor Deposition (CVD) growth process.

Indications of post-growth treatment.



**IGI**



February 5, 2026  
IGI Report No. LG769665441  
CUT CORNERED RECT. MODIFIED BRILLIANT

1.41 CARAT  
FANCY VIVID GREEN  
VS 1  
62.6%  
61%  
Thick

Polished  
VERY GOOD  
VERY GOOD  
NONE  
IGI LG769665441

Comments: This Laboratory Grown Diamond was created by Chemical Vapor Deposition (CVD) growth process. Indications of post-growth treatment.