



**INTERNATIONAL
GEMOLOGICAL
INSTITUTE**

ELECTRONIC COPY



February 4, 2026

IGI Report Number **LG769667497**

MODIFIED RECTANGULAR

CUSHION STEP CUT

LABORATORY GROWN DIAMOND

7.25 X 4.17 X 2.97 MM

Carat Weight **0.71 CARAT**

Color Grade **FANCY VIVID GREEN**

Clarity Grade **VVS 2**

Polish **EXCELLENT**

Symmetry **EXCELLENT**

Fluorescence **NONE**

Inscription(s) **IGI LG769667497**

Comments: This Laboratory Grown Diamond was created by Chemical Vapor Deposition (CVD) growth process. Indications of post-growth treatment.

LABORATORY GROWN DIAMOND REPORT

February 4, 2026

IGI Report Number

LG769667497

Description

LABORATORY GROWN DIAMOND

Shape and Cutting Style

**MODIFIED RECTANGULAR CUSHION STEP
CUT**

Measurements

7.25 X 4.17 X 2.97 MM

GRADING RESULTS

Carat Weight

0.71 CARAT

Color Grade

FANCY VIVID GREEN

Clarity Grade

VVS 2

ADDITIONAL GRADING INFORMATION

Polish

EXCELLENT

Symmetry

EXCELLENT

Fluorescence

NONE

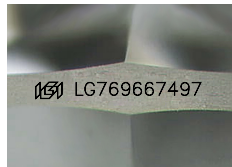
Inscription(s)

IGI LG769667497

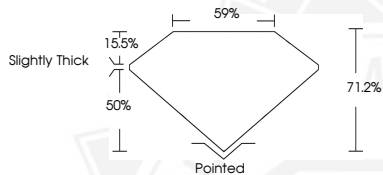
Comments: This Laboratory Grown Diamond was created by

Chemical Vapor Deposition (CVD) growth process.

Indications of post-growth treatment.



Sample Image Used



February 4, 2026

IGI Report Number **LG769667497**

MODIFIED RECTANGULAR

CUSHION STEP CUT

LABORATORY GROWN DIAMOND

7.25 X 4.17 X 2.97 MM

Carat Weight **0.71 CARAT**

Color Grade **FANCY VIVID GREEN**

Clarity Grade **VVS 2**

Polish **EXCELLENT**

Symmetry **EXCELLENT**

Fluorescence **NONE**

Inscription(s) **IGI LG769667497**

Comments: This Laboratory Grown Diamond was created by Chemical Vapor Deposition (CVD) growth process. Indications of post-growth treatment.



THIS DOCUMENT WAS PRODUCED WITH THE FOLLOWING SECURITY MEASURES: SPECIAL DOCUMENT PAPER, INK SCREENS, WATERMARK, BACKGROUND DESIGNS, HOLOGRAM AND OTHER SECURITY FEATURES NOT LISTED AND DO EXCEED DOCUMENT SECURITY INDUSTRY GUIDELINES.

For terms & conditions and to verify this report, please visit www.igi.org