



**INTERNATIONAL  
GEMOLOGICAL  
INSTITUTE**

**ELECTRONIC COPY**



February 4, 2026

IGI Report Number **LG769667498**

**MODIFIED RECTANGULAR**

**CUSHION STEP CUT**

**LABORATORY GROWN DIAMOND**

**5.51 X 5.09 X 3.36 MM**

Carat Weight **0.80 CARAT**

Color Grade **FANCY VIVID GREEN**

Clarity Grade **VS 1**

Polish **EXCELLENT**

Symmetry **VERY GOOD**

Fluorescence **NONE**

Inscription(s) **IGI LG769667498**

Comments: This Laboratory Grown Diamond was created by Chemical Vapor Deposition (CVD) growth process. Indications of post-growth treatment.

**LABORATORY GROWN DIAMOND REPORT**

February 4, 2026

IGI Report Number

**LG769667498**

Description

**LABORATORY GROWN DIAMOND**

Shape and Cutting Style

**MODIFIED RECTANGULAR CUSHION STEP  
CUT**

Measurements

**5.51 X 5.09 X 3.36 MM**

**GRADING RESULTS**

Carat Weight

**0.80 CARAT**

Color Grade

**FANCY VIVID GREEN**

Clarity Grade

**VS 1**

**ADDITIONAL GRADING INFORMATION**

Polish

**EXCELLENT**

Symmetry

**VERY GOOD**

Fluorescence

**NONE**

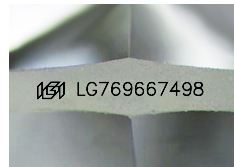
Inscription(s)

**IGI LG769667498**

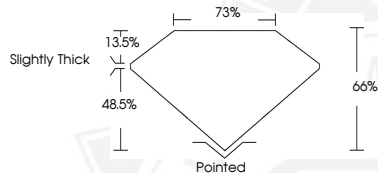
Comments: This Laboratory Grown Diamond was created by

Chemical Vapor Deposition (CVD) growth process.

Indications of post-growth treatment.



Sample Image Used



February 4, 2026

IGI Report Number **LG769667498**

**MODIFIED RECTANGULAR**

**CUSHION STEP CUT**

**LABORATORY GROWN DIAMOND**

**5.51 X 5.09 X 3.36 MM**

Carat Weight **0.80 CARAT**

Color Grade **FANCY VIVID GREEN**

Clarity Grade **VS 1**

Polish **EXCELLENT**

Symmetry **VERY GOOD**

Fluorescence **NONE**

Inscription(s) **IGI LG769667498**

Comments: This Laboratory Grown Diamond was created by Chemical Vapor Deposition (CVD) growth process. Indications of post-growth treatment.



THIS DOCUMENT WAS PRODUCED WITH THE FOLLOWING SECURITY MEASURES: SPECIAL DOCUMENT PAPER, INK SCREENS, WATERMARK, BACKGROUND DESIGNS, HOLOGRAM AND OTHER SECURITY FEATURES NOT LISTED AND DO EXCEED DOCUMENT SECURITY INDUSTRY GUIDELINES.

For terms & conditions and to verify this report, please visit [www.igi.org](http://www.igi.org)