



**ELECTRONIC COPY**

LG769668498  
Report verification at igi.org



January 28, 2026

IGI Report Number **LG769668498**

Description **LABORATORY GROWN DIAMOND**

Shape and Cutting Style **ROUND BRILLIANT**

Measurements **7.37 - 7.43 X 4.46 MM**

**GRADING RESULTS**

Carat Weight **1.51 CARAT**

Color Grade **D**

Clarity Grade **VVS 2**

Cut Grade **IDEAL**

January 28, 2026  
IGI Report Number **LG769668498**  
Description **LABORATORY GROWN DIAMOND**  
Shape and Cutting Style **ROUND BRILLIANT**  
Measurements **7.37 - 7.43 X 4.46 MM**

**GRADING RESULTS**

Carat Weight **1.51 CARAT**

Color Grade **D**

Clarity Grade **VVS 2**

Cut Grade **IDEAL**

**ADDITIONAL GRADING INFORMATION**

Polish **EXCELLENT**

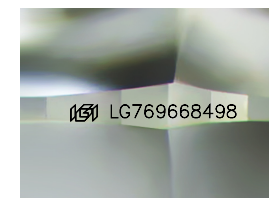
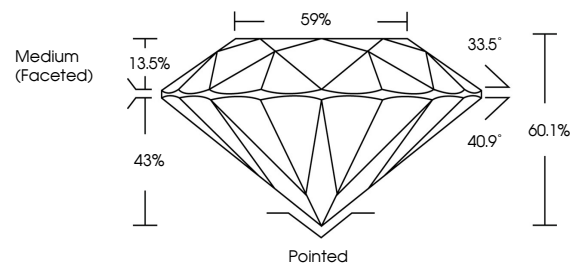
Symmetry **EXCELLENT**

Fluorescence **NONE**

Inscription(s) **LG769668498**

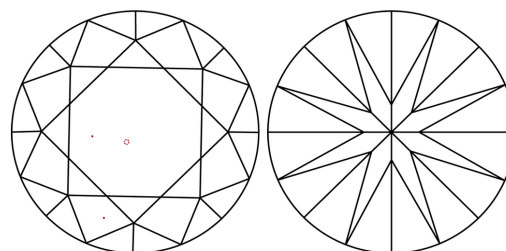
Comments: This Laboratory Grown Diamond was created by Chemical Vapor Deposition (CVD) growth process.  
Type IIa

**PROPORTIONS**



Sample Image Used

**CLARITY CHARACTERISTICS**



**KEY TO SYMBOLS**

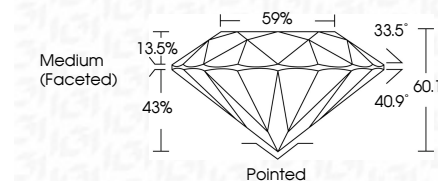
Red symbols indicate internal characteristics.  
Green symbols indicate external characteristics.

**COLOR**

D E F G H I J Faint Very Light Light

**CLARITY**

FL	IF	VVS <sup>1-2</sup>	VS <sup>1-2</sup>	SI <sup>1-2</sup>	I <sup>1-3</sup>
Flawless	Internally Flawless	Very Very Slightly Included	Very Slightly Included	Slightly Included	Included



**ADDITIONAL GRADING INFORMATION**

Polish **EXCELLENT**

Symmetry **EXCELLENT**

Fluorescence **NONE**

Inscription(s) **LG769668498**

Comments: This Laboratory Grown Diamond was created by Chemical Vapor Deposition (CVD) growth process.  
Type IIa



**IGI**



January 28, 2026	IGI Report No <b>LG769668498</b>	<b>1.51 CARAT</b>	<b>D</b>	<b>Pointed</b>
<b>ROUND BRILLIANT</b>	<b>7.37 - 7.43 X 4.46 MM</b>	<b>VVS 2</b>	<b>IDEAL</b>	<b>EXCELLENT</b>
Carat Weight	Color Grade	Clarity Grade	Depth	Symmetry
			<b>60.1%</b>	<b>EXCELLENT</b>
			Table	Fluorescence
			<b>59%</b>	<b>NONE</b>
			Grade	Inscription(s)
			<b>Medium (Faceted)</b>	<b>LG769668498</b>
			Culet	Comments: This Laboratory Grown Diamond was created by Chemical Vapor Deposition (CVD) growth process.
			<b>None</b>	<b>Type IIa</b>