



ELECTRONIC COPY

LG769671254
Report verification at igi.org



February 2, 2026

IGI Report Number **LG769671254**

Description **LABORATORY GROWN DIAMOND**

Shape and Cutting Style **PEAR BRILLIANT**

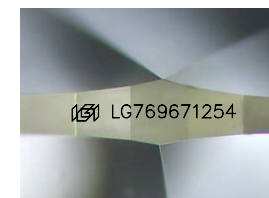
Measurements **9.65 X 6.06 X 3.82 MM**

GRADING RESULTS

Carat Weight **1.32 CARAT**

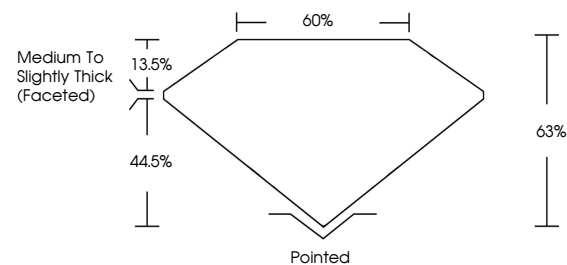
Color Grade **D**

Clarity Grade **VVS 2**

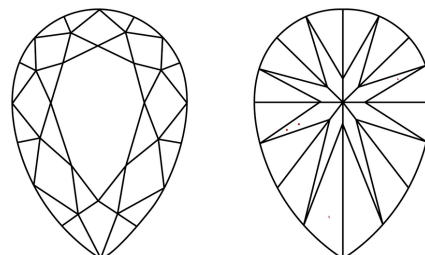


Sample Image Used

PROPORTIONS



CLARITY CHARACTERISTICS



KEY TO SYMBOLS

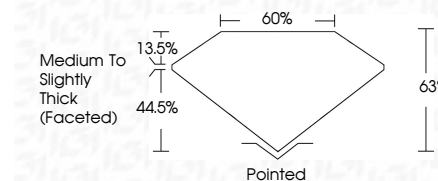
Red symbols indicate internal characteristics.
Green symbols indicate external characteristics.

COLOR

D E F G H I J Faint Very Light Light

CLARITY

FL	IF	VVS ¹⁻²	VS ¹⁻²	SI ¹⁻²	I ¹⁻³
Flawless	Internally Flawless	Very Very Slightly Included	Very Slightly Included	Slightly Included	Included



ADDITIONAL GRADING INFORMATION

Polish **EXCELLENT**

Symmetry **EXCELLENT**

Fluorescence **NONE**

Inscription(s) **IGI LG769671254**

Comments: This Laboratory Grown Diamond was created by Chemical Vapor Deposition (CVD) growth process. Type IIa



IGI



February 2, 2026	1.32 CARAT	D	VVS 2	63%	60%	Pointed	EXCELLENT	EXCELLENT	NONE	IGI LG769671254
IGI Report No LG769671254	9.65 X 6.06 X 3.82 MM	PEAR BRILLIANT	Medium to Slightly Thick (Faceted)	Depth	Table	Graile	Culet	Polish	Symmetry	Fluorescence

Comments: This Laboratory Grown Diamond was created by Chemical Vapor Deposition (CVD) growth process. Type IIa