



ELECTRONIC COPY

LG770629640
Report verification at igi.org



May 7, 2026

IGI Report Number **LG770629640**

Description **LABORATORY GROWN DIAMOND**

Shape and Cutting Style **CUT CORNERED
RECTANGULAR MODIFIED
BRILLIANT**

Measurements **7.40 X 5.37 X 3.75 MM**

GRADING RESULTS

Carat Weight **1.50 CARAT**

Color Grade **FANCY YELLOW**

Clarity Grade **VVS 2**

May 7, 2026

IGI Report Number **LG770629640**

Description **LABORATORY GROWN DIAMOND**

Shape and Cutting Style **CUT CORNERED RECTANGULAR
MODIFIED BRILLIANT**

Measurements **7.40 X 5.37 X 3.75 MM**

GRADING RESULTS

Carat Weight **1.50 CARAT**

Color Grade **FANCY YELLOW**

Clarity Grade **VVS 2**

ADDITIONAL GRADING INFORMATION

Polish **EXCELLENT**

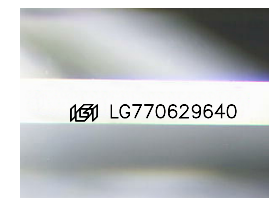
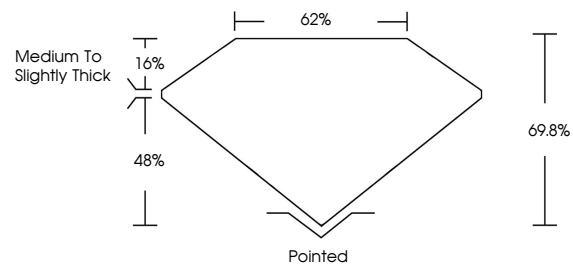
Symmetry **EXCELLENT**

Fluorescence **NONE**

Inscription(s) **IGI LG770629640**

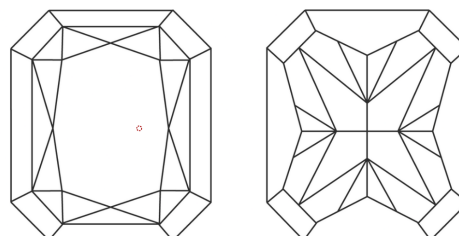
Comments: This Laboratory Grown Diamond was created by Chemical Vapor Deposition (CVD) growth process.

PROPORTIONS



Sample Image Used

CLARITY CHARACTERISTICS



KEY TO SYMBOLS

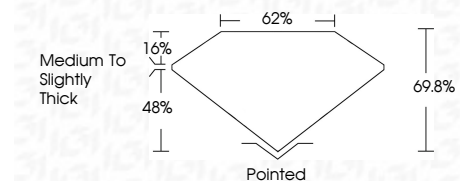
Red symbols indicate internal characteristics.
Green symbols indicate external characteristics.

COLOR

D E F G H I J Faint Very Light Light

CLARITY

FL	IF	VVS ¹⁻²	VS ¹⁻²	SI ¹⁻²	I ¹⁻³
Flawless	Internally Flawless	Very Very Slightly Included	Very Slightly Included	Slightly Included	Included



ADDITIONAL GRADING INFORMATION

Polish **EXCELLENT**

Symmetry **EXCELLENT**

Fluorescence **NONE**

Inscription(s) **IGI LG770629640**

Comments: This Laboratory Grown Diamond was created by Chemical Vapor Deposition (CVD) growth process.



IGI



May 7, 2026
IGI Report No LG770629640
CUT CORNERED RECT. MODIFIED BRILLIANT
7.40 X 5.37 X 3.75 MM
1.50 CARAT
FANCY YELLOW
VVS 2
69.8%
62%
Medium to Slightly Thick
Pointed
EXCELLENT
EXCELLENT
NONE
IGI LG770629640

Comments: This Laboratory Grown Diamond was created by Chemical Vapor Deposition (CVD) growth process.