



ELECTRONIC COPY

LG770634603
Report verification at igi.org



February 12, 2026
IGI Report Number **LG770634603**
Description **LABORATORY GROWN DIAMOND**
Shape and Cutting Style **CUSHION MODIFIED BRILLIANT**
Measurements **20.09 X 13.34 X 9.14 MM**
GRADING RESULTS
Carat Weight **20.04 CARATS**
Color Grade **E**
Clarity Grade **VVS 2**

February 12, 2026
IGI Report Number **LG770634603**
Description **LABORATORY GROWN DIAMOND**
Shape and Cutting Style **CUSHION MODIFIED BRILLIANT**
Measurements **20.09 X 13.34 X 9.14 MM**

GRADING RESULTS

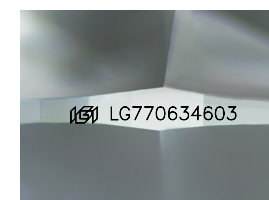
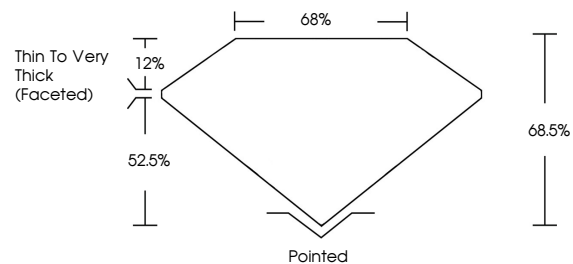
Carat Weight **20.04 CARATS**
Color Grade **E**
Clarity Grade **VVS 2**

ADDITIONAL GRADING INFORMATION

Polish **EXCELLENT**
Symmetry **EXCELLENT**
Fluorescence **NONE**
Inscription(s) **IGI LG770634603**

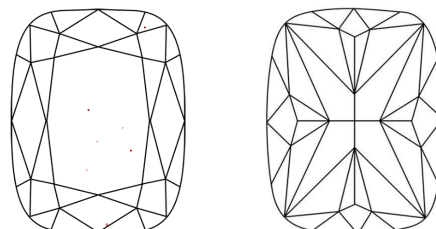
Comments: This Laboratory Grown Diamond was created by Chemical Vapor Deposition (CVD) growth process. Type IIa

PROPORTIONS



Sample Image Used

CLARITY CHARACTERISTICS



KEY TO SYMBOLS

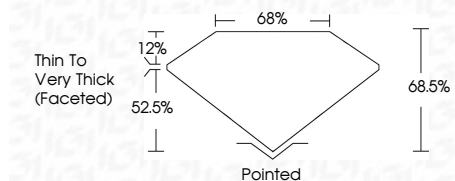
Red symbols indicate internal characteristics.
Green symbols indicate external characteristics.

COLOR

D E F G H I J Faint Very Light Light

CLARITY

| FL | IF | VVS ¹⁻² | VS ¹⁻² | SI ¹⁻² | I ¹⁻³ |
|----------|---------------------|-----------------------------|------------------------|-------------------|------------------|
| Flawless | Internally Flawless | Very Very Slightly Included | Very Slightly Included | Slightly Included | Included |



ADDITIONAL GRADING INFORMATION

Polish **EXCELLENT**
Symmetry **EXCELLENT**
Fluorescence **NONE**
Inscription(s) **IGI LG770634603**
Comments: This Laboratory Grown Diamond was created by Chemical Vapor Deposition (CVD) growth process. Type IIa



February 12, 2026
IGI Report No LG770634603
CUSHION MODIFIED BRILLIANT
20.09 X 13.34 X 9.14 MM
20.04 CARATS
E
VVS 2
68.0%
52.5%
Thin To Very Thick (Faceted)
Pointed
EXCELLENT
EXCELLENT
NONE
IGI LG770634603
Comments: This Laboratory Grown Diamond was created by Chemical Vapor Deposition (CVD) growth process. Type IIa