



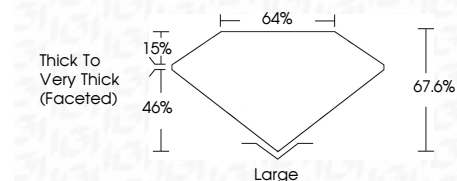
**ELECTRONIC COPY**

LG770636491  
Report verification at igi.org



March 27, 2026  
IGI Report Number **LG770636491**  
Description **LABORATORY GROWN DIAMOND**  
Shape and Cutting Style **ANTIQUÉ CUSHION CUT**  
Measurements **9.73 X 9.62 X 6.50 MM**

**GRADING RESULTS**  
Carat Weight **5.03 CARATS**  
Color Grade **G**  
Clarity Grade **VVS 2**



**ADDITIONAL GRADING INFORMATION**  
Polish **EXCELLENT**  
Symmetry **EXCELLENT**  
Fluorescence **NONE**  
Inscription(s) **(IGI) LG770636491**  
Comments: This Laboratory Grown Diamond was created by Chemical Vapor Deposition (CVD) growth process. Type IIa



March 27, 2026  
IGI Report No LG770636491  
**ANTIQUÉ CUSHION CUT**  
9.73 X 9.62 X 6.50 MM  
5.03 CARATS  
G  
VVS 2  
67.6%  
46%  
15%  
Large  
EXCELLENT  
EXCELLENT  
NONE  
(IGI) LG770636491  
Comments: This Laboratory Grown Diamond was created by Chemical Vapor Deposition (CVD) growth process. Type IIa

**LABORATORY GROWN DIAMOND REPORT**

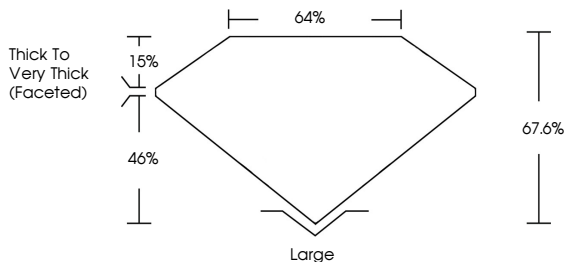
March 27, 2026  
IGI Report Number **LG770636491**  
Description **LABORATORY GROWN DIAMOND**  
Shape and Cutting Style **ANTIQUÉ CUSHION CUT**  
Measurements **9.73 X 9.62 X 6.50 MM**

**GRADING RESULTS**  
Carat Weight **5.03 CARATS**  
Color Grade **G**  
Clarity Grade **VVS 2**

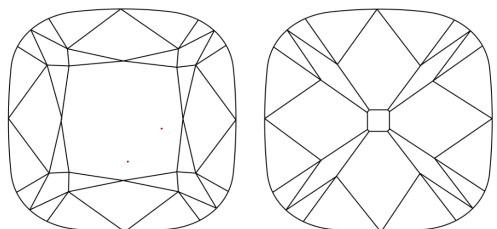
**ADDITIONAL GRADING INFORMATION**  
Polish **EXCELLENT**  
Symmetry **EXCELLENT**  
Fluorescence **NONE**  
Inscription(s) **(IGI) LG770636491**

Comments: This Laboratory Grown Diamond was created by Chemical Vapor Deposition (CVD) growth process. Type IIa

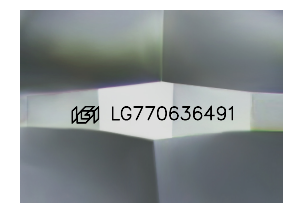
**PROPORTIONS**



**CLARITY CHARACTERISTICS**



**KEY TO SYMBOLS**  
Red symbols indicate internal characteristics.  
Green symbols indicate external characteristics.



Sample Image Used

**COLOR**

|   |   |   |   |   |   |   |       |            |       |
|---|---|---|---|---|---|---|-------|------------|-------|
| D | E | F | G | H | I | J | Faint | Very Light | Light |
|---|---|---|---|---|---|---|-------|------------|-------|

**CLARITY**

|          |                     |                             |                        |                   |                  |
|----------|---------------------|-----------------------------|------------------------|-------------------|------------------|
| FL       | IF                  | VVS <sup>1-2</sup>          | VS <sup>1-2</sup>      | SI <sup>1-2</sup> | I <sup>1-3</sup> |
| Flawless | Internally Flawless | Very Very Slightly Included | Very Slightly Included | Slightly Included | Included         |

