



ELECTRONIC COPY

LG770638126
Report verification at igi.org



February 5, 2026

IGI Report Number LG770638126

Description LABORATORY GROWN DIAMOND

Shape and Cutting Style ROUND BRILLIANT

Measurements 7.52 - 7.54 X 4.64 MM

GRADING RESULTS

Carat Weight 1.60 CARAT

Color Grade F

Clarity Grade VS 2

Cut Grade IDEAL

February 5, 2026
IGI Report Number LG770638126
Description LABORATORY GROWN DIAMOND
Shape and Cutting Style ROUND BRILLIANT
Measurements 7.52 - 7.54 X 4.64 MM

GRADING RESULTS

Carat Weight 1.60 CARAT

Color Grade F

Clarity Grade VS 2

Cut Grade IDEAL

ADDITIONAL GRADING INFORMATION

Polish EXCELLENT

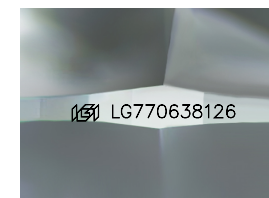
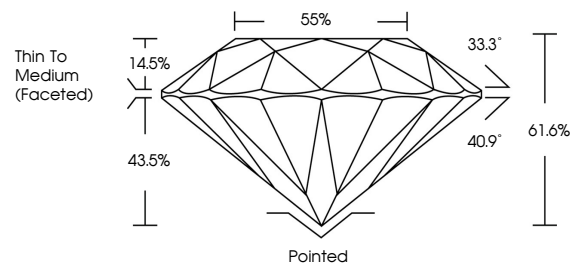
Symmetry EXCELLENT

Fluorescence NONE

Inscription(s) LG770638126

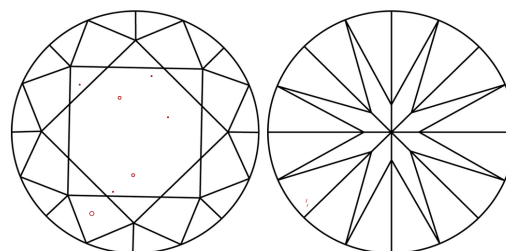
Comments: This Laboratory Grown Diamond was created by Chemical Vapor Deposition (CVD) growth process. Type IIa

PROPORTIONS



Sample Image Used

CLARITY CHARACTERISTICS



KEY TO SYMBOLS

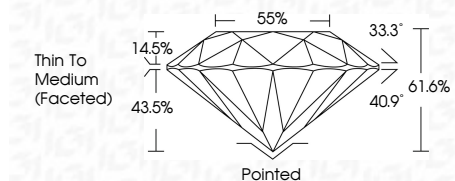
Red symbols indicate internal characteristics. Green symbols indicate external characteristics.

COLOR

D E F G H I J Faint Very Light Light

CLARITY

Table with columns: FL, IF, VS 1-2, VS 1-2, SI 1-2, I 1-3. Row: Flawless, Internally Flawless, Very Very Slightly Included, Very Slightly Included, Slightly Included, Included



ADDITIONAL GRADING INFORMATION

Polish EXCELLENT

Symmetry EXCELLENT

Fluorescence NONE

Inscription(s) LG770638126

Comments: This Laboratory Grown Diamond was created by Chemical Vapor Deposition (CVD) growth process. Type IIa



Summary table of report details: February 5, 2026, IGI Report No LG770638126, ROUND BRILLIANT, 7.52 - 7.54 X 4.64 MM, 1.60 CARAT, F, VS 2, IDEAL, 61.6%, 55%, Thin To Medium (Faceted), Pointed, EXCELLENT, EXCELLENT, NONE, LG770638126. Comments: This Laboratory Grown Diamond was created by Chemical Vapor Deposition (CVD) growth process. Type IIa