



INTERNATIONAL GEMOLOGICAL INSTITUTE

ELECTRONIC COPY

LABORATORY GROWN DIAMOND REPORT

February 3, 2026
IGI Report Number **LG770658963**
Description **LABORATORY GROWN DIAMOND**
Shape and Cutting Style **ROUND BRILLIANT**
Measurements **5.15 - 5.19 X 3.17 MM**

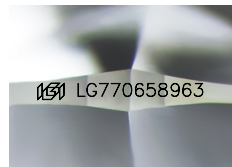
GRADING RESULTS

Carat Weight **0.51 CARAT**
Color Grade **G**
Clarity Grade **VS 1**
Cut Grade **IDEAL**

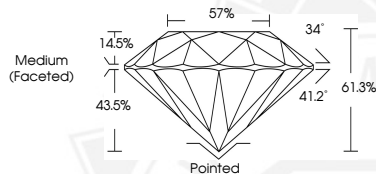
ADDITIONAL GRADING INFORMATION

Polish **EXCELLENT**
Symmetry **EXCELLENT**
Fluorescence **NONE**
Inscription(s) **IGI LG770658963**

Comments: As Grown - No indication of post-growth treatment.
This Laboratory Grown Diamond was created by High Pressure High Temperature (HPHT) growth process.
Type II
Faint Blue



Sample Image Used



February 3, 2026

IGI Report Number **LG770658963**
ROUND BRILLIANT
LABORATORY GROWN DIAMOND
5.15 - 5.19 X 3.17 MM

Carat Weight **0.51 CARAT**
Color Grade **G**
Clarity Grade **VS 1**
Cut Grade **IDEAL**
Polish **EXCELLENT**
Symmetry **EXCELLENT**
Fluorescence **NONE**
Inscription(s) **IGI LG770658963**

Comments: As Grown - No indication of post-growth treatment. This Laboratory Grown Diamond was created by High Pressure High Temperature (HPHT) growth process. Type II Faint Blue



February 3, 2026

IGI Report Number **LG770658963**
ROUND BRILLIANT
LABORATORY GROWN DIAMOND
5.15 - 5.19 X 3.17 MM

Carat Weight **0.51 CARAT**
Color Grade **G**
Clarity Grade **VS 1**
Cut Grade **IDEAL**
Polish **EXCELLENT**
Symmetry **EXCELLENT**
Fluorescence **NONE**
Inscription(s) **IGI LG770658963**

Comments: As Grown - No indication of post-growth treatment. This Laboratory Grown Diamond was created by High Pressure High Temperature (HPHT) growth process. Type II Faint Blue



THIS DOCUMENT WAS PRODUCED WITH THE FOLLOWING SECURITY MEASURES: SPECIAL DOCUMENT PAPER, INK SCREENS, WATERMARK, BACKGROUND DESIGNS, HOLOGRAM AND OTHER SECURITY FEATURES NOT LISTED AND DO EXCEED DOCUMENT SECURITY INDUSTRY GUIDELINES.

For terms & conditions and to verify this report, please visit www.igi.org