



ELECTRONIC COPY

LG770679814
Report verification at igi.org



February 20, 2026

IGI Report Number **LG770679814**

Description **LABORATORY GROWN DIAMOND**

Shape and Cutting Style **ROUND BRILLIANT**

Measurements **10.68 - 10.71 X 6.42 MM**

GRADING RESULTS

Carat Weight **4.56 CARATS**

Color Grade **E**

Clarity Grade **VVS 2**

Cut Grade **IDEAL**

February 20, 2026
IGI Report Number **LG770679814**
Description **LABORATORY GROWN DIAMOND**
Shape and Cutting Style **ROUND BRILLIANT**
Measurements **10.68 - 10.71 X 6.42 MM**

GRADING RESULTS

Carat Weight **4.56 CARATS**

Color Grade **E**

Clarity Grade **VVS 2**

Cut Grade **IDEAL**

ADDITIONAL GRADING INFORMATION

Polish **EXCELLENT**

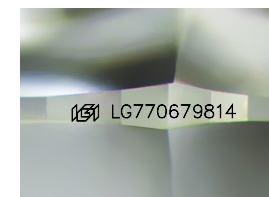
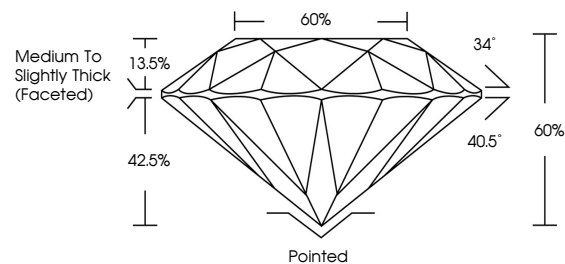
Symmetry **EXCELLENT**

Fluorescence **NONE**

Inscription(s) **IGI LG770679814**

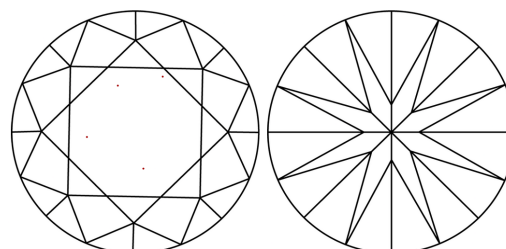
Comments: This Laboratory Grown Diamond was created by Chemical Vapor Deposition (CVD) growth process.
Type IIa

PROPORTIONS



Sample Image Used

CLARITY CHARACTERISTICS



KEY TO SYMBOLS

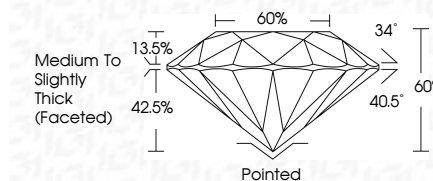
Red symbols indicate internal characteristics.
Green symbols indicate external characteristics.

COLOR

D E F G H I J Faint Very Light Light

CLARITY

FL	IF	VVS ¹⁻²	VS ¹⁻²	SI ¹⁻²	I ¹⁻³
Flawless	Internally Flawless	Very Very Slightly Included	Very Slightly Included	Slightly Included	Included



ADDITIONAL GRADING INFORMATION

Polish **EXCELLENT**

Symmetry **EXCELLENT**

Fluorescence **NONE**

Inscription(s) **IGI LG770679814**

Comments: This Laboratory Grown Diamond was created by Chemical Vapor Deposition (CVD) growth process.
Type IIa



IGI



February 20, 2026	IGI Report No LG770679814	4.56 CARATS	E	Pointed
ROUND BRILLIANT	10.68 - 10.71 X 6.42 MM	VVS 2	IDEAL	EXCELLENT
Color Grade	Clarity Grade	Cut Grade	Depth	Table
E	VVS 2	IDEAL	65%	65%
Medium To Slightly Thick (Faceted)				
Culet	Polish	Symmetry	Fluorescence	Inscription(s)
	EXCELLENT	EXCELLENT	NONE	IGI LG770679814
Comments: This Laboratory Grown Diamond was created by Chemical Vapor Deposition (CVD) growth process. Type IIa				