



**INTERNATIONAL
GEMOLOGICAL
INSTITUTE**

ELECTRONIC COPY

LABORATORY GROWN DIAMOND REPORT

February 5, 2026

IGI Report Number

LG770683121

Description

LABORATORY GROWN DIAMOND

Shape and Cutting Style

CUSHION MODIFIED BRILLIANT

Measurements

6.79 X 4.84 X 3.07 MM

GRADING RESULTS

Carat Weight

0.82 CARAT

Color Grade

D

Clarity Grade

VVS 2

ADDITIONAL GRADING INFORMATION

Polish

VERY GOOD

Symmetry

VERY GOOD

Fluorescence

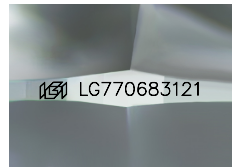
NONE

Inscription(s)

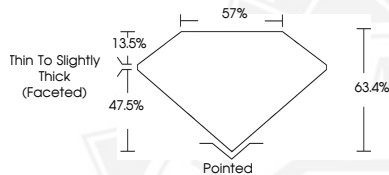
IGI LG770683121

Comments: This Laboratory Grown Diamond was created by
Chemical Vapor Deposition (CVD) growth process.

Type IIa



Sample Image Used



February 5, 2026

IGI Report Number LG770683121

CUSHION MODIFIED BRILLIANT

LABORATORY GROWN DIAMOND

6.79 X 4.84 X 3.07 MM

Carat Weight 0.82 CARAT

Color Grade D

Clarity Grade VVS 2

Polish VERY GOOD

Symmetry VERY GOOD

Fluorescence NONE

Inscription(s) IGI LG770683121

Comments: This Laboratory Grown
Diamond was created by
Chemical Vapor Deposition (CVD)
growth process. Type IIa



February 5, 2026

IGI Report Number LG770683121

CUSHION MODIFIED BRILLIANT

LABORATORY GROWN DIAMOND

6.79 X 4.84 X 3.07 MM

Carat Weight 0.82 CARAT

Color Grade D

Clarity Grade VVS 2

Polish VERY GOOD

Symmetry VERY GOOD

Fluorescence NONE

Inscription(s) IGI LG770683121

Comments: This Laboratory Grown
Diamond was created by
Chemical Vapor Deposition (CVD)
growth process. Type IIa



THIS DOCUMENT WAS PRODUCED WITH THE FOLLOWING SECURITY MEASURES: SPECIAL DOCUMENT PAPER, INK SCREENS, WATERMARK, BACKGROUND DESIGNS, HOLOGRAM AND OTHER SECURITY FEATURES NOT LISTED AND DO EXCEED DOCUMENT SECURITY INDUSTRY GUIDELINES.

For terms & conditions and to verify this report, please visit www.igi.org