



March 18, 2026

IGI Report Number LG770687088
**CUT CORNERED RECTANGULAR
MODIFIED BRILLIANT
LABORATORY GROWN DIAMOND**
6.70 X 4.47 X 2.86 MM

Carat Weight 0.77 CARAT
Color Grade G
Clarity Grade VVS 2
Polish VERY GOOD
Symmetry VERY GOOD
Fluorescence NONE
Inscription(s) IGI LG770687088

Comments: This Laboratory Grown Diamond was created by Chemical Vapor Deposition (CVD) growth process. Type IIa

LABORATORY GROWN DIAMOND REPORT

March 18, 2026

IGI Report Number

LG770687088

Description

LABORATORY GROWN DIAMOND

Shape and Cutting Style

CUT CORNERED RECTANGULAR MODIFIED
BRILLIANT

Measurements

6.70 X 4.47 X 2.86 MM

GRADING RESULTS

Carat Weight

0.77 CARAT

Color Grade

G

Clarity Grade

VVS 2

ADDITIONAL GRADING INFORMATION

Polish

VERY GOOD

Symmetry

VERY GOOD

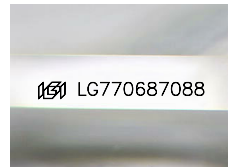
Fluorescence

NONE

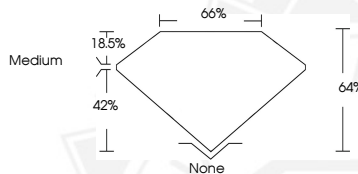
Inscription(s)

IGI LG770687088

Comments: This Laboratory Grown Diamond was created by Chemical Vapor Deposition (CVD) growth process. Type IIa



Sample Image Used



March 18, 2026

IGI Report Number LG770687088
**CUT CORNERED RECTANGULAR
MODIFIED BRILLIANT
LABORATORY GROWN DIAMOND**
6.70 X 4.47 X 2.86 MM

Carat Weight 0.77 CARAT
Color Grade G
Clarity Grade VVS 2
Polish VERY GOOD
Symmetry VERY GOOD
Fluorescence NONE
Inscription(s) IGI LG770687088

Comments: This Laboratory Grown Diamond was created by Chemical Vapor Deposition (CVD) growth process. Type IIa



THIS DOCUMENT WAS PRODUCED WITH THE FOLLOWING SECURITY MEASURES: SPECIAL DOCUMENT PAPER, INK SCREENS, WATERMARK, BACKGROUND DESIGNS, HOLOGRAM AND OTHER SECURITY FEATURES NOT LISTED AND DO EXCEED DOCUMENT SECURITY INDUSTRY GUIDELINES.