



March 19, 2026

IGI Report Number **LG770687536**

**OVAL BRILLIANT
LABORATORY GROWN DIAMOND
5.52 X 3.85 X 2.38 MM**

Carat Weight	0.32 CARAT
Color Grade	D
Clarity Grade	VVS 2
Polish	GOOD
Symmetry	VERY GOOD
Fluorescence	NONE
Inscription(s)	IGI LG770687536

Comments: This Laboratory Grown Diamond was created by Chemical Vapor Deposition (CVD) growth process. Type IIa

LABORATORY GROWN DIAMOND REPORT

March 19, 2026
IGI Report Number **LG770687536**
Description **LABORATORY GROWN DIAMOND**
Shape and Cutting Style **OVAL BRILLIANT**
Measurements **5.52 X 3.85 X 2.38 MM**

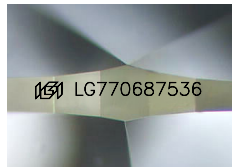
GRADING RESULTS

Carat Weight **0.32 CARAT**
Color Grade **D**
Clarity Grade **VVS 2**

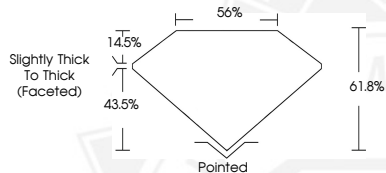
ADDITIONAL GRADING INFORMATION

Polish **GOOD**
Symmetry **VERY GOOD**
Fluorescence **NONE**
Inscription(s) **IGI LG770687536**

Comments: This Laboratory Grown Diamond was created by Chemical Vapor Deposition (CVD) growth process.
Type IIa



Sample Image Used



March 19, 2026

IGI Report Number **LG770687536**

**OVAL BRILLIANT
LABORATORY GROWN DIAMOND
5.52 X 3.85 X 2.38 MM**

Carat Weight	0.32 CARAT
Color Grade	D
Clarity Grade	VVS 2
Polish	GOOD
Symmetry	VERY GOOD
Fluorescence	NONE
Inscription(s)	IGI LG770687536

Comments: This Laboratory Grown Diamond was created by Chemical Vapor Deposition (CVD) growth process. Type IIa



THIS DOCUMENT WAS PRODUCED WITH THE FOLLOWING SECURITY MEASURES: SPECIAL DOCUMENT PAPER, INK SCREENS, WATERMARK, BACKGROUND DESIGNS, HOLOGRAM AND OTHER SECURITY FEATURES NOT LISTED AND DO EXCEED DOCUMENT SECURITY INDUSTRY GUIDELINES.