



# INTERNATIONAL GEMOLOGICAL INSTITUTE

ELECTRONIC COPY



February 2, 2026

IGI Report Number LG770690438

ROUND BRILLIANT  
LABORATORY GROWN DIAMOND  
4.11 - 4.17 X 2.44 MM

0.25 CARAT  
D  
VVS 1  
EXCELLENT  
EXCELLENT  
EXCELLENT  
NONE  
Inscription(s) IGI LG770690438

Comments: This Laboratory Grown Diamond was created by Chemical Vapor Deposition (CVD) growth process. Type IIa

## LABORATORY GROWN DIAMOND REPORT

February 2, 2026  
IGI Report Number LG770690438  
Description LABORATORY GROWN DIAMOND  
Shape and Cutting Style ROUND BRILLIANT  
Measurements 4.11 - 4.17 X 2.44 MM

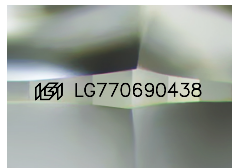
### GRADING RESULTS

Carat Weight 0.25 CARAT  
Color Grade D  
Clarity Grade VVS 1  
Cut Grade EXCELLENT

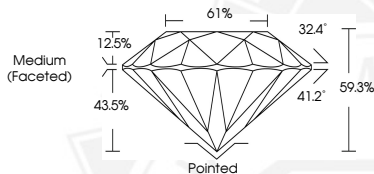
### ADDITIONAL GRADING INFORMATION

Polish EXCELLENT  
Symmetry EXCELLENT  
Fluorescence NONE  
Inscription(s) IGI LG770690438

Comments: This Laboratory Grown Diamond was created by Chemical Vapor Deposition (CVD) growth process. Type IIa



Sample Image Used



February 2, 2026

IGI Report Number LG770690438

ROUND BRILLIANT  
LABORATORY GROWN DIAMOND  
4.11 - 4.17 X 2.44 MM

0.25 CARAT  
D  
VVS 1  
EXCELLENT  
EXCELLENT  
EXCELLENT  
NONE  
Inscription(s) IGI LG770690438

Comments: This Laboratory Grown Diamond was created by Chemical Vapor Deposition (CVD) growth process. Type IIa



THIS DOCUMENT WAS PRODUCED WITH THE FOLLOWING SECURITY MEASURES: SPECIAL DOCUMENT PAPER, INK SCREENS, WATERMARK, BACKGROUND DESIGNS, HOLOGRAM AND OTHER SECURITY FEATURES NOT LISTED AND DO EXCEED DOCUMENT SECURITY INDUSTRY GUIDELINES.

For terms & conditions and to verify this report, please visit [www.igi.org](http://www.igi.org)