



January 29, 2026

IGI Report Number **LG770690571**

**ROUND BRILLIANT**

**LABORATORY GROWN DIAMOND**

**4.67 - 4.69 X 2.87 MM**

|                |                        |
|----------------|------------------------|
| Carat Weight   | <b>0.38 CARAT</b>      |
| Color Grade    | <b>D</b>               |
| Clarity Grade  | <b>VS 1</b>            |
| Cut Grade      | <b>IDEAL</b>           |
| Polish         | <b>EXCELLENT</b>       |
| Symmetry       | <b>EXCELLENT</b>       |
| Fluorescence   | <b>NONE</b>            |
| Inscription(s) | <b>IGI LG770690571</b> |

Comments: This Laboratory Grown Diamond was created by Chemical Vapor Deposition (CVD) growth process. Type IIa

**LABORATORY GROWN DIAMOND REPORT**

January 29, 2026

IGI Report Number

**LG770690571**

Description

**LABORATORY GROWN DIAMOND**

Shape and Cutting Style

**ROUND BRILLIANT**

Measurements

**4.67 - 4.69 X 2.87 MM**

**GRADING RESULTS**

Carat Weight

**0.38 CARAT**

Color Grade

**D**

Clarity Grade

**VS 1**

Cut Grade

**IDEAL**

**ADDITIONAL GRADING INFORMATION**

Polish

**EXCELLENT**

Symmetry

**EXCELLENT**

Fluorescence

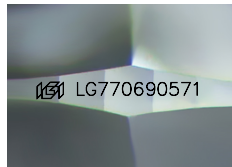
**NONE**

Inscription(s)

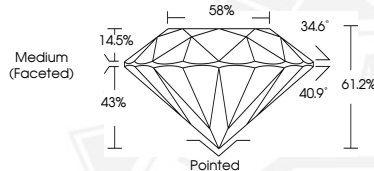
**IGI LG770690571**

Comments: This Laboratory Grown Diamond was created by Chemical Vapor Deposition (CVD) growth process.

Type IIa



Sample Image Used



January 29, 2026

IGI Report Number **LG770690571**

**ROUND BRILLIANT**

**LABORATORY GROWN DIAMOND**

**4.67 - 4.69 X 2.87 MM**

|                |                        |
|----------------|------------------------|
| Carat Weight   | <b>0.38 CARAT</b>      |
| Color Grade    | <b>D</b>               |
| Clarity Grade  | <b>VS 1</b>            |
| Cut Grade      | <b>IDEAL</b>           |
| Polish         | <b>EXCELLENT</b>       |
| Symmetry       | <b>EXCELLENT</b>       |
| Fluorescence   | <b>NONE</b>            |
| Inscription(s) | <b>IGI LG770690571</b> |

Comments: This Laboratory Grown Diamond was created by Chemical Vapor Deposition (CVD) growth process. Type IIa



THIS DOCUMENT WAS PRODUCED WITH THE FOLLOWING SECURITY MEASURES: SPECIAL DOCUMENT PAPER, INK SCREENS, WATERMARK, BACKGROUND DESIGNS, HOLOGRAM AND OTHER SECURITY FEATURES NOT LISTED AND DO EXCEED DOCUMENT SECURITY INDUSTRY GUIDELINES.