



LABORATORY GROWN DIAMOND REPORT

March 11, 2026
 IGI Report Number **LG770699849**
 Description **LABORATORY GROWN DIAMOND**
 Shape and Cutting Style **CUT CORNERED RECTANGULAR MODIFIED
BRILLIANT**
 Measurements **6.10 X 4.13 X 2.77 MM**

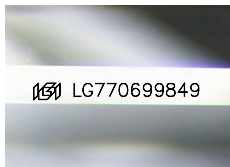
GRADING RESULTS

Carat Weight **0.60 CARAT**
 Color Grade **E**
 Clarity Grade **VVS 1**
 Cut Grade **VERY GOOD**

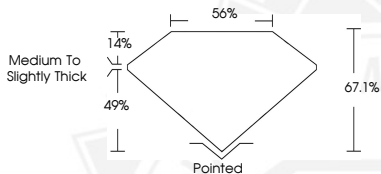
ADDITIONAL GRADING INFORMATION

Polish **EXCELLENT**
 Symmetry **VERY GOOD**
 Fluorescence **NONE**
 Inscription(s) **IGI LG770699849**

Comments: As Grown - No indication of post-growth treatment.
 This Laboratory Grown Diamond was created by High Pressure High
 Temperature (HPHT) growth process.
 Type II



Sample Image Used



March 11, 2026
 IGI Report Number **LG770699849**
 CUT CORNERED RECTANGULAR
 MODIFIED BRILLIANT
 LABORATORY GROWN DIAMOND
6.10 X 4.13 X 2.77 MM
 Carat Weight **0.60 CARAT**
 Color Grade **E**
 Clarity Grade **VVS 1**
 Cut Grade **VERY GOOD**
 Polish **EXCELLENT**
 Symmetry **VERY GOOD**
 Fluorescence **NONE**
 Inscription(s) **IGI LG770699849**

Comments: As Grown - No indication of post-growth treatment. This Laboratory Grown Diamond was created by High Pressure High Temperature (HPHT) growth process. Type II



March 11, 2026
 IGI Report Number **LG770699849**
 CUT CORNERED RECTANGULAR
 MODIFIED BRILLIANT
 LABORATORY GROWN DIAMOND
6.10 X 4.13 X 2.77 MM
 Carat Weight **0.60 CARAT**
 Color Grade **E**
 Clarity Grade **VVS 1**
 Cut Grade **VERY GOOD**
 Polish **EXCELLENT**
 Symmetry **VERY GOOD**
 Fluorescence **NONE**
 Inscription(s) **IGI LG770699849**

Comments: As Grown - No indication of post-growth treatment. This Laboratory Grown Diamond was created by High Pressure High Temperature (HPHT) growth process. Type II

THIS DOCUMENT WAS PRODUCED WITH THE FOLLOWING SECURITY MEASURES: SPECIAL DOCUMENT PAPER, INK SCREENS, WATERMARK, BACKGROUND DESIGNS, HOLOGRAM AND OTHER SECURITY FEATURES NOT LISTED AND DO EXCEED DOCUMENT SECURITY INDUSTRY GUIDELINES.