



ELECTRONIC COPY

LG771614857
Report verification at igi.org



February 4, 2026

IGI Report Number **LG771614857**

Description **LABORATORY GROWN DIAMOND**

Shape and Cutting Style **CUT CORNERED
RECTANGULAR MODIFIED
BRILLIANT**

Measurements **7.87 X 5.56 X 3.75 MM**

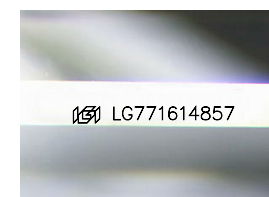
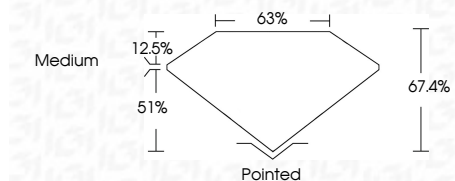
GRADING RESULTS

Carat Weight **1.36 CARAT**

Color Grade **D**

Clarity Grade **VVS 1**

Cut Grade **EXCELLENT**



Sample Image Used

ADDITIONAL GRADING INFORMATION

Polish **EXCELLENT**

Symmetry **EXCELLENT**

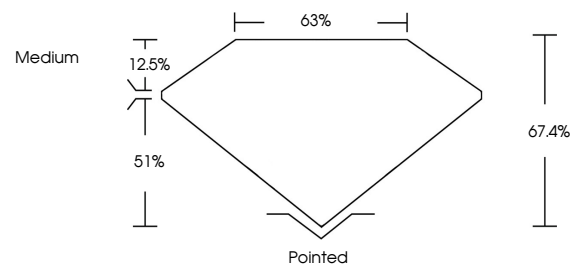
Fluorescence **NONE**

Inscription(s) **IGI LG771614857**

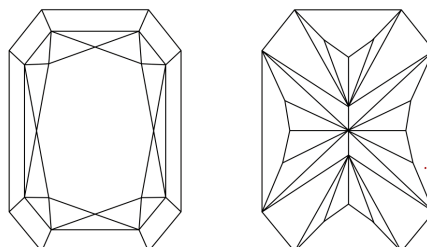
Comments: This Laboratory Grown Diamond was created by Chemical Vapor Deposition (CVD) growth process. Type IIa



PROPORTIONS



CLARITY CHARACTERISTICS



KEY TO SYMBOLS

Red symbols indicate internal characteristics.
Green symbols indicate external characteristics.

COLOR

D E F G H I J Faint Very Light Light

CLARITY

FL IF VVS¹⁻² VS¹⁻² SI¹⁻² I¹⁻³

Flawless Internally Flawless Very Very Slightly Included Very Slightly Included Slightly Included Included



February 4, 2026
IGI Report No LG771614857
CUT CORNERED RECT. MODIFIED BRILLIANT
7.87 X 5.56 X 3.75 MM
1.36 CARAT
D
Color Grade
VVS 1
EXCELLENT
67.4%
63%
Medium
Pointed
EXCELLENT
EXCELLENT
NONE
IGI LG771614857
Comments: This Laboratory Grown Diamond was created by Chemical Vapor Deposition (CVD) growth process. Type IIa