



ELECTRONIC COPY

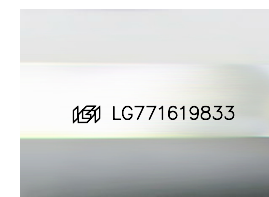
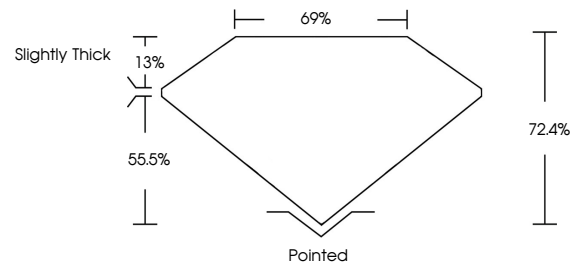
LG771619833
Report verification at igi.org



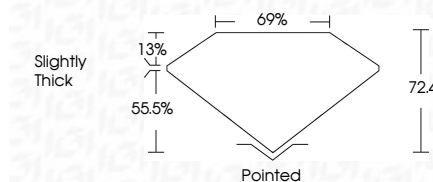
February 27, 2026
IGI Report Number **LG771619833**
Description **LABORATORY GROWN DIAMOND**
Shape and Cutting Style **PRINCESS CUT**
Measurements **7.84 X 7.78 X 5.63 MM**
GRADING RESULTS
Carat Weight **3.05 CARATS**
Color Grade **I**
Clarity Grade **VVS 2**

February 27, 2026
IGI Report Number **LG771619833**
Description **LABORATORY GROWN DIAMOND**
Shape and Cutting Style **PRINCESS CUT**
Measurements **7.84 X 7.78 X 5.63 MM**
GRADING RESULTS
Carat Weight **3.05 CARATS**
Color Grade **I**
Clarity Grade **VVS 2**

PROPORTIONS



Sample Image Used



ADDITIONAL GRADING INFORMATION

Polish **EXCELLENT**
Symmetry **EXCELLENT**
Fluorescence **NONE**
Inscription(s) **IGI LG771619833**

Comments: This Laboratory Grown Diamond was created by Chemical Vapor Deposition (CVD) growth process.
Type IIa

ADDITIONAL GRADING INFORMATION

Polish **EXCELLENT**
Symmetry **EXCELLENT**
Fluorescence **NONE**
Inscription(s) **IGI LG771619833**
Comments: This Laboratory Grown Diamond was created by Chemical Vapor Deposition (CVD) growth process.
Type IIa

COLOR

D E F G H I J Faint Very Light Light

CLARITY

FL	IF	VVS ¹⁻²	VS ¹⁻²	SI ¹⁻²	I ¹⁻³
Flawless	Internally Flawless	Very Very Slightly Included	Very Slightly Included	Slightly Included	Included



IGI



February 27, 2026
IGI Report No LG771619833
PRINCESS CUT
3.05 CARATS
I
7.84 X 7.78 X 5.63 MM
Carat Weight
Color Grade
VVS 2
Clarity Grade
72.4%
Depth
69%
Table
Slightly Thick
Grades
Pointed
Culet
EXCELLENT
Polish
EXCELLENT
Symmetry
NONE
Fluorescence
IGI LG771619833
Inscription(s)
Comments: This Laboratory Grown Diamond was created by Chemical Vapor Deposition (CVD) growth process.
Type IIa