



February 6, 2026

IGI Report Number **LG771620197**

**ROUND BRILLIANT
LABORATORY GROWN DIAMOND
6.17 - 6.20 X 3.80 MM**

**0.89 CARAT
E
VS 1
IDEAL
EXCELLENT
EXCELLENT
NONE
Inscription(s) LG771620197**

Comments: As Grown - No indication of post-growth treatment. This Laboratory Grown Diamond was created by High Pressure High Temperature (HPHT) growth process. Type II

LABORATORY GROWN DIAMOND REPORT

February 6, 2026
IGI Report Number **LG771620197**
Description **LABORATORY GROWN DIAMOND**
Shape and Cutting Style **ROUND BRILLIANT**
Measurements **6.17 - 6.20 X 3.80 MM**

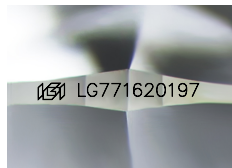
GRADING RESULTS

Carat Weight **0.89 CARAT**
Color Grade **E**
Clarity Grade **VS 1**
Cut Grade **IDEAL**

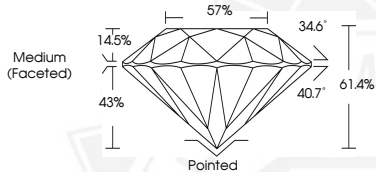
ADDITIONAL GRADING INFORMATION

Polish **EXCELLENT**
Symmetry **EXCELLENT**
Fluorescence **NONE**
Inscription(s) **LG771620197**

Comments: As Grown - No indication of post-growth treatment. This Laboratory Grown Diamond was created by High Pressure High Temperature (HPHT) growth process. Type II



Sample Image Used



February 6, 2026

IGI Report Number **LG771620197**

**ROUND BRILLIANT
LABORATORY GROWN DIAMOND
6.17 - 6.20 X 3.80 MM**

**0.89 CARAT
E
VS 1
IDEAL
EXCELLENT
EXCELLENT
NONE
Inscription(s) LG771620197**

Comments: As Grown - No indication of post-growth treatment. This Laboratory Grown Diamond was created by High Pressure High Temperature (HPHT) growth process. Type II



THIS DOCUMENT WAS PRODUCED WITH THE FOLLOWING SECURITY MEASURES: SPECIAL DOCUMENT PAPER, INK SCREENS, WATERMARK, BACKGROUND DESIGNS, HOLOGRAM AND OTHER SECURITY FEATURES NOT LISTED AND DO EXCEED DOCUMENT SECURITY INDUSTRY GUIDELINES.