



ELECTRONIC COPY

LG771621894
Report verification at igi.org



February 3, 2026

IGI Report Number **LG771621894**

Description **LABORATORY GROWN DIAMOND**

Shape and Cutting Style **OVAL BRILLIANT**

Measurements **9.90 X 7.25 X 4.56 MM**

GRADING RESULTS

Carat Weight **2.10 CARATS**

Color Grade **E**

Clarity Grade **VS 2**

February 3, 2026
IGI Report Number **LG771621894**
Description **LABORATORY GROWN DIAMOND**
Shape and Cutting Style **OVAL BRILLIANT**
Measurements **9.90 X 7.25 X 4.56 MM**

GRADING RESULTS

Carat Weight **2.10 CARATS**

Color Grade **E**

Clarity Grade **VS 2**

ADDITIONAL GRADING INFORMATION

Polish **EXCELLENT**

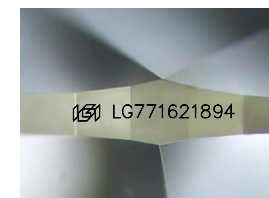
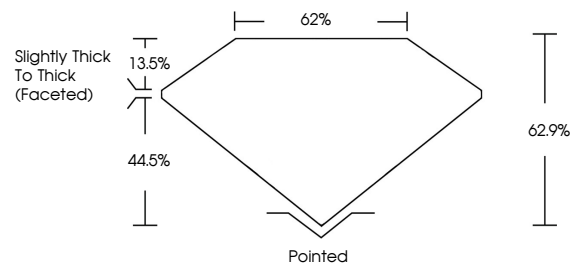
Symmetry **EXCELLENT**

Fluorescence **NONE**

Inscription(s) **IGI LG771621894**

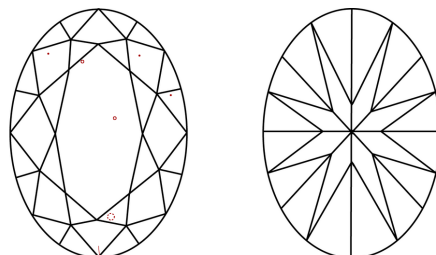
Comments: This Laboratory Grown Diamond was created by Chemical Vapor Deposition (CVD) growth process. Type IIa

PROPORTIONS



Sample Image Used

CLARITY CHARACTERISTICS



KEY TO SYMBOLS

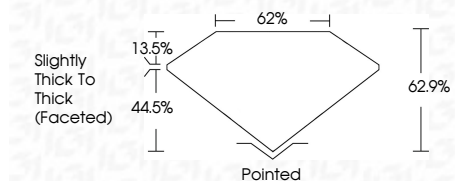
Red symbols indicate internal characteristics.
Green symbols indicate external characteristics.

COLOR

D E F G H I J Faint Very Light Light

CLARITY

FL	IF	VS ¹⁻²	VS ¹⁻²	SI ¹⁻²	I ¹⁻³
Flawless	Internally Flawless	Very Very Slightly Included	Very Slightly Included	Slightly Included	Included



ADDITIONAL GRADING INFORMATION

Polish **EXCELLENT**

Symmetry **EXCELLENT**

Fluorescence **NONE**

Inscription(s) **IGI LG771621894**

Comments: This Laboratory Grown Diamond was created by Chemical Vapor Deposition (CVD) growth process. Type IIa



IGI



February 3, 2026
IGI Report No LG771621894
OVAL BRILLIANT
9.90 X 7.25 X 4.56 MM
2.10 CARATS
E
Color Grade
VS 2
Depth 62.9%
Table 62%
Slightly Thick To Thick (Faceted)
Pointed
Culet
Polish EXCELLENT
Symmetry EXCELLENT
Fluorescence NONE
Inscription(s) IGI LG771621894
Comments: This Laboratory Grown Diamond was created by Chemical Vapor Deposition (CVD) growth process. Type IIa