



ELECTRONIC COPY

LG771627909
Report verification at igi.org



February 6, 2026
IGI Report Number **LG771627909**
Description **LABORATORY GROWN DIAMOND**
Shape and Cutting Style **CUSHION MODIFIED BRILLIANT**
Measurements **14.00 X 11.25 X 7.29 MM**
GRADING RESULTS
Carat Weight **10.73 CARATS**
Color Grade **FANCY INTENSE BLUE GREEN**
Clarity Grade **VVS 2**

LABORATORY GROWN DIAMOND REPORT

February 6, 2026
IGI Report Number **LG771627909**
Description **LABORATORY GROWN DIAMOND**
Shape and Cutting Style **CUSHION MODIFIED BRILLIANT**
Measurements **14.00 X 11.25 X 7.29 MM**

GRADING RESULTS

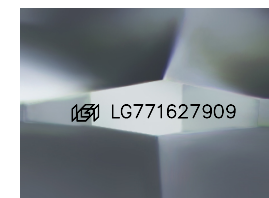
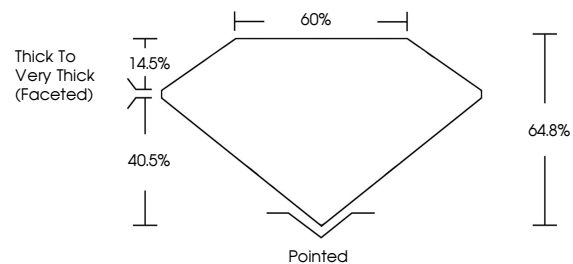
Carat Weight **10.73 CARATS**
Color Grade **FANCY INTENSE BLUE GREEN**
Clarity Grade **VVS 2**

ADDITIONAL GRADING INFORMATION

Polish **EXCELLENT**
Symmetry **EXCELLENT**
Fluorescence **NONE**
Inscription(s) **IGI LG771627909**

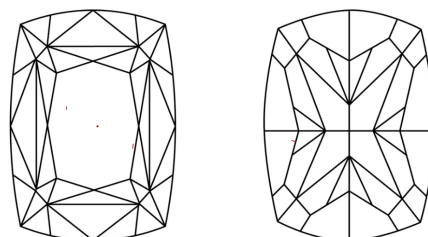
Comments: This Laboratory Grown Diamond was created by Chemical Vapor Deposition (CVD) growth process.
Indications of post-growth treatment.

PROPORTIONS



Sample Image Used

CLARITY CHARACTERISTICS



KEY TO SYMBOLS

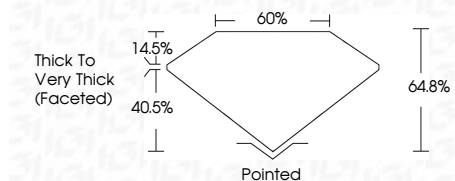
Red symbols indicate internal characteristics.
Green symbols indicate external characteristics.

COLOR

D E F G H I J Faint Very Light Light

CLARITY

FL	IF	VVS ¹⁻²	VS ¹⁻²	SI ¹⁻²	I ¹⁻³
Flawless	Internally Flawless	Very Very Slightly Included	Very Slightly Included	Slightly Included	Included



ADDITIONAL GRADING INFORMATION

Polish **EXCELLENT**
Symmetry **EXCELLENT**
Fluorescence **NONE**
Inscription(s) **IGI LG771627909**
Comments: This Laboratory Grown Diamond was created by Chemical Vapor Deposition (CVD) growth process.
Indications of post-growth treatment.



February 6, 2026
IGI Report No LG771627909
CUSHION MODIFIED BRILLIANT
10.73 CARATS
14.00 X 11.25 X 7.29 MM
Carat Weight
Color Grade
FANCY INTENSE BLUE GREEN
Clarity Grade
VVS 2
Depth
64.8%
Table
40.5%
Girdle
Thick to Very Thick (Faceted)
Culet
Pointed
Polish
EXCELLENT
Symmetry
EXCELLENT
Fluorescence
NONE
Inscription(s)
IGI LG771627909

Comments: This Laboratory Grown Diamond was created by Chemical Vapor Deposition (CVD) growth process.
Indications of post-growth treatment.