



ELECTRONIC COPY

LG771633595
Report verification at igi.org



January 31, 2026

IGI Report Number **LG771633595**

Description **LABORATORY GROWN DIAMOND**

Shape and Cutting Style **ROUND BRILLIANT**

Measurements **7.49 - 7.50 X 4.61 MM**

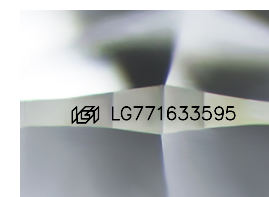
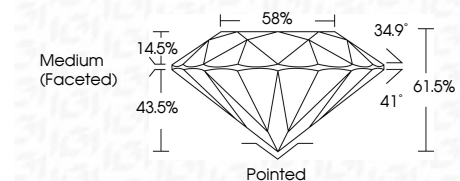
GRADING RESULTS

Carat Weight **1.60 CARAT**

Color Grade **E**

Clarity Grade **INTERNALLY FLAWLESS**

Cut Grade **IDEAL**



Sample Image Used

ADDITIONAL GRADING INFORMATION

Polish **EXCELLENT**

Symmetry **EXCELLENT**

Fluorescence **NONE**

Inscription(s) **IGI LG771633595**

Comments: HEARTS & ARROWS
As Grown - No indication of post-growth treatment.
This Laboratory Grown Diamond was created by High Pressure High Temperature (HPHT) growth process.
Type II



January 31, 2026
IGI Report No LG771633595
ROUND BRILLIANT

7.49 - 7.50 X 4.61 MM

Carat Weight **1.60 CARAT**

Color Grade **E**

Clarity Grade **IF**

Cut Grade **IDEAL**

Depth **61.5%**

Table **58%**

Girdle **Medium (Faceted)**

Culet **Pointed**

Polish **EXCELLENT**

Symmetry **EXCELLENT**

Fluorescence **NONE**

Inscription(s) **IGI LG771633595**

Comments: **HEARTS & ARROWS**
As Grown - No indication of post-growth treatment.
This Laboratory Grown Diamond was created by High Pressure High Temperature (HPHT) growth process.
Type II

January 31, 2026
IGI Report Number **LG771633595**
Description **LABORATORY GROWN DIAMOND**
Shape and Cutting Style **ROUND BRILLIANT**
Measurements **7.49 - 7.50 X 4.61 MM**

GRADING RESULTS

Carat Weight **1.60 CARAT**

Color Grade **E**

Clarity Grade **INTERNALLY FLAWLESS**

Cut Grade **IDEAL**

ADDITIONAL GRADING INFORMATION

Polish **EXCELLENT**

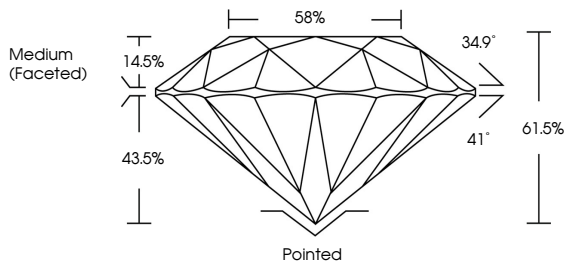
Symmetry **EXCELLENT**

Fluorescence **NONE**

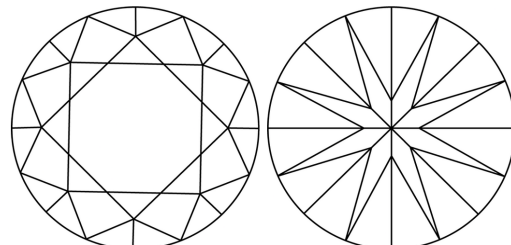
Inscription(s) **IGI LG771633595**

Comments: HEARTS & ARROWS
As Grown - No indication of post-growth treatment.
This Laboratory Grown Diamond was created by High Pressure High Temperature (HPHT) growth process.
Type II

PROPORTIONS

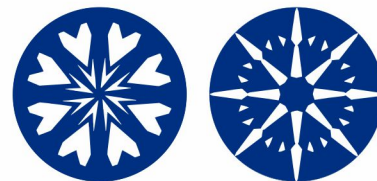


CLARITY CHARACTERISTICS



KEY TO SYMBOLS

Red symbols indicate internal characteristics.
Green symbols indicate external characteristics.



COLOR

D	E	F	G	H	I	J	Faint	Very Light	Light
---	---	---	---	---	---	---	-------	------------	-------

CLARITY

FL	IF	VS ¹⁻²	VS ¹⁻²	SI ¹⁻²	I ¹⁻³
Flawless	Internally Flawless	Very Very Slightly Included	Very Slightly Included	Slightly Included	Included

