



ELECTRONIC COPY

LG771635994
Report verification at igi.org



February 3, 2026

IGI Report Number **LG771635994**

Description **LABORATORY GROWN DIAMOND**

Shape and Cutting Style **OVAL BRILLIANT**

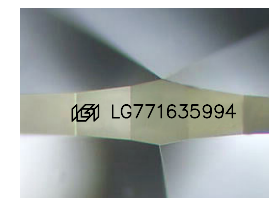
Measurements **9.37 X 6.49 X 4.08 MM**

GRADING RESULTS

Carat Weight **1.56 CARAT**

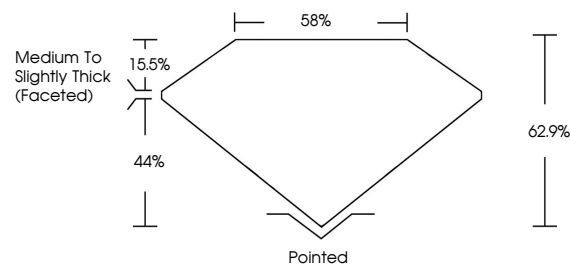
Color Grade **E**

Clarity Grade **VS 2**

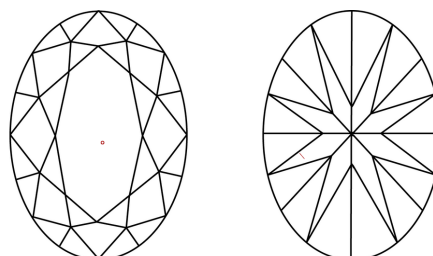


Sample Image Used

PROPORTIONS



CLARITY CHARACTERISTICS



KEY TO SYMBOLS

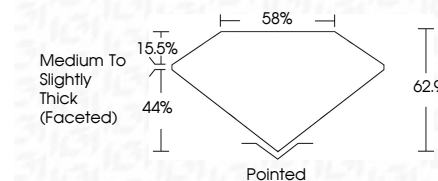
Red symbols indicate internal characteristics.
Green symbols indicate external characteristics.

COLOR

D E F G H I J Faint Very Light Light

CLARITY

FL	IF	VS ¹⁻²	VS ¹⁻²	SI ¹⁻²	I ¹⁻³
Flawless	Internally Flawless	Very Very Slightly Included	Very Slightly Included	Slightly Included	Included



ADDITIONAL GRADING INFORMATION

Polish **EXCELLENT**

Symmetry **EXCELLENT**

Fluorescence **NONE**

Inscription(s) **IGI LG771635994**

Comments: This Laboratory Grown Diamond was created by Chemical Vapor Deposition (CVD) growth process. Type IIa



IGI



February 3, 2026
IGI Report No LG771635994
OVAL BRILLIANT
9.37 X 6.49 X 4.08 MM
Carat Weight 1.56 CARAT
Color Grade E
Clarity Grade VS 2
Depth 62.9%
Table 58%
Girdle Medium to Slightly Thick (Faceted)
Culet Pointed
Polish EXCELLENT
Symmetry EXCELLENT
Fluorescence NONE
Inscription(s) IGI LG771635994
Comments: This Laboratory Grown Diamond was created by Chemical Vapor Deposition (CVD) growth process. Type IIa