



**ELECTRONIC COPY**

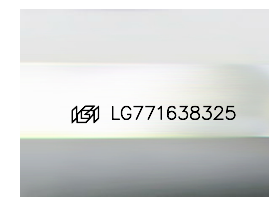
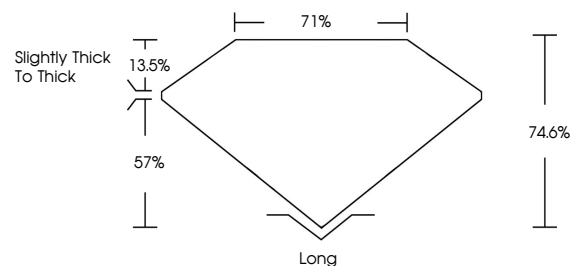
LG771638325  
Report verification at [igi.org](http://igi.org)



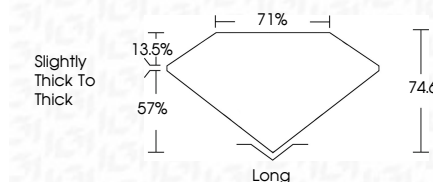
February 12, 2026  
IGI Report Number **LG771638325**  
Description **LABORATORY GROWN DIAMOND**  
Shape and Cutting Style **EMERALD CUT**  
Measurements **6.30 X 4.65 X 3.47 MM**  
**GRADING RESULTS**  
Carat Weight **1.01 CARAT**  
Color Grade **FANCY YELLOW**  
Clarity Grade **SI 1**

February 12, 2026  
IGI Report Number **LG771638325**  
Description **LABORATORY GROWN DIAMOND**  
Shape and Cutting Style **EMERALD CUT**  
Measurements **6.30 X 4.65 X 3.47 MM**  
**GRADING RESULTS**  
Carat Weight **1.01 CARAT**  
Color Grade **FANCY YELLOW**  
Clarity Grade **SI 1**

**PROPORTIONS**



Sample Image Used



**ADDITIONAL GRADING INFORMATION**

Polish **EXCELLENT**  
Symmetry **VERY GOOD**  
Fluorescence **VERY SLIGHT**  
Inscription(s) **IGI LG771638325**

Comments: This Laboratory Grown Diamond was created by Chemical Vapor Deposition (CVD) growth process. Indications of post-growth treatment.

**ADDITIONAL GRADING INFORMATION**

Polish **EXCELLENT**  
Symmetry **VERY GOOD**  
Fluorescence **VERY SLIGHT**  
Inscription(s) **IGI LG771638325**

Comments: This Laboratory Grown Diamond was created by Chemical Vapor Deposition (CVD) growth process. Indications of post-growth treatment.

**COLOR**

D E F G H I J Faint Very Light Light

**CLARITY**

FL	IF	VS <sup>1-2</sup>	VS <sup>1-2</sup>	SI <sup>1-2</sup>	I <sup>1-3</sup>
Flawless	Internally Flawless	Very Very Slightly Included	Very Slightly Included	Slightly Included	Included



**IGI**



February 12, 2026  
IGI Report No **LG771638325**  
**EMERALD CUT**  
1.01 CARAT  
FANCY YELLOW  
SI 1  
6.30 X 4.65 X 3.47 MM  
Color Grade  
Fancy Yellow  
SI 1  
Depth 74.6%  
Table 71%  
Girdle Slightly thick to thick  
Culet Long  
Polish EXCELLENT  
Symmetry VERY GOOD  
Fluorescence VERY SLIGHT  
Inscription(s) IGI LG771638325  
Comments: This Laboratory Grown Diamond was created by Chemical Vapor Deposition (CVD) growth process. Indications of post-growth treatment.