



ELECTRONIC COPY

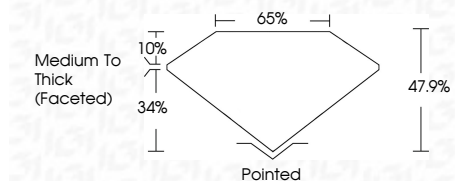
LG771639094
Report verification at igi.org



April 7, 2026
IGI Report Number **LG771639094**
Description **LABORATORY GROWN DIAMOND**
Shape and Cutting Style **HEART MODIFIED BRILLIANT**
Measurements **9.67 X 11.54 X 5.53 MM**

GRADING RESULTS

Carat Weight **4.44 CARATS**
Color Grade **FANCY VIVID PINK**
Clarity Grade **VS 1**



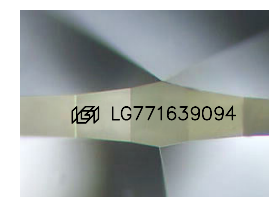
ADDITIONAL GRADING INFORMATION

Polish **EXCELLENT**
Symmetry **EXCELLENT**
Fluorescence **SLIGHT**
Inscription(s) **IGI LG771639094**
Comments: This Laboratory Grown Diamond was created by Chemical Vapor Deposition (CVD) growth process. Indications of post-growth treatment.



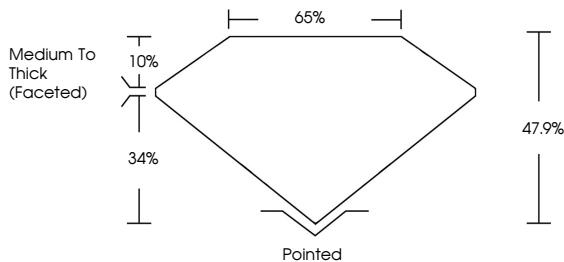
April 7, 2026
IGI Report No LG771639094
HEART MODIFIED BRILLIANT
9.67 X 11.54 X 5.53 MM
4.44 CARATS
FANCY VIVID PINK
VS 1
47.9%
65%
Medium To Thick (Faceted)
Pointed
EXCELLENT
EXCELLENT
SLIGHT
IGI LG771639094

Comments: This Laboratory Grown Diamond was created by Chemical Vapor Deposition (CVD) growth process. Indications of post-growth treatment.

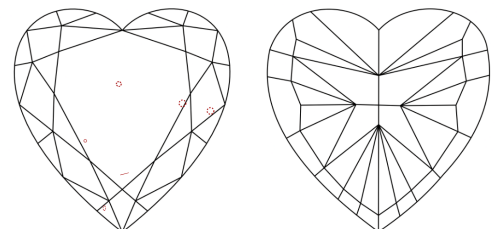


Sample Image Used

PROPORTIONS



CLARITY CHARACTERISTICS



KEY TO SYMBOLS

Red symbols indicate internal characteristics.
Green symbols indicate external characteristics.

COLOR

D	E	F	G	H	I	J	Faint	Very Light	Light
---	---	---	---	---	---	---	-------	------------	-------

CLARITY

FL	IF	VS ¹⁻²	VS ¹⁻²	SI ¹⁻²	I ¹⁻³
Flawless	Internally Flawless	Very Very Slightly Included	Very Slightly Included	Slightly Included	Included

