



ELECTRONIC COPY

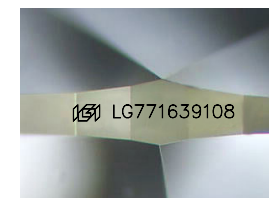
LG771639108
Report verification at igi.org



April 7, 2026
IGI Report Number **LG771639108**
Description **LABORATORY GROWN DIAMOND**
Shape and Cutting Style **HEART MODIFIED BRILLIANT**
Measurements **9.87 X 11.82 X 6.30 MM**

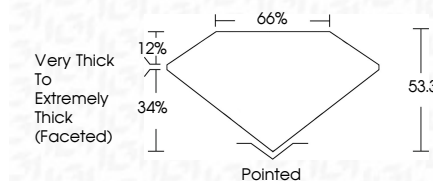
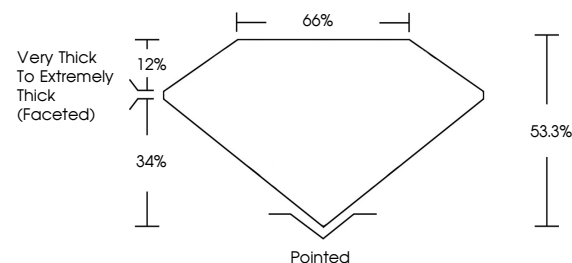
GRADING RESULTS

Carat Weight **5.55 CARATS**
Color Grade **FANCY VIVID PINK**
Clarity Grade **VS 1**

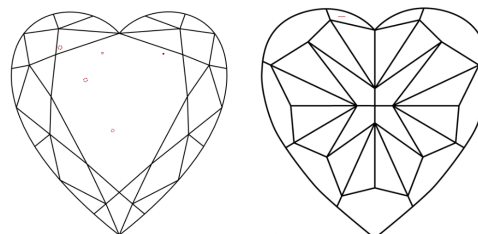


Sample Image Used

PROPORTIONS



CLARITY CHARACTERISTICS



KEY TO SYMBOLS

Red symbols indicate internal characteristics.
Green symbols indicate external characteristics.

COLOR

D E F G H I J Faint Very Light Light

CLARITY

FL	IF	VS ¹⁻²	VS ¹⁻²	SI ¹⁻²	I ¹⁻³
Flawless	Internally Flawless	Very Very Slightly Included	Very Slightly Included	Slightly Included	Included

ADDITIONAL GRADING INFORMATION

Polish **EXCELLENT**
Symmetry **EXCELLENT**
Fluorescence **SLIGHT**
Inscription(s) **IGI LG771639108**

Comments: This Laboratory Grown Diamond was created by Chemical Vapor Deposition (CVD) growth process. Indications of post-growth treatment.



IGI



April 7, 2026
IGI Report No **LG771639108**
HEART MODIFIED BRILLIANT
9.87 X 11.82 X 6.30 MM
Carat Weight **5.55 CARATS**
Color Grade **FANCY VIVID PINK**
Clarity Grade **VS 1**
Depth **65%**
Table **65%**
Girdle **Very Thick to Extremely Thick (Faceted)**
Culet **Pointed**
Polish **EXCELLENT**
Symmetry **EXCELLENT**
Fluorescence **SLIGHT**
Inscription(s) **IGI LG771639108**
Comments: This Laboratory Grown Diamond was created by Chemical Vapor Deposition (CVD) growth process. Indications of post-growth treatment.