



**ELECTRONIC COPY**

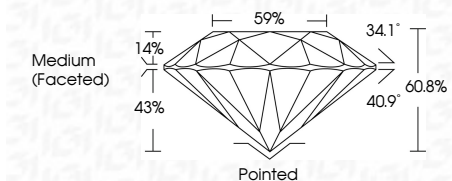
LG771642137  
Report verification at igi.org



March 24, 2026  
IGI Report Number **LG771642137**  
Description **LABORATORY GROWN DIAMOND**  
Shape and Cutting Style **ROUND BRILLIANT**  
Measurements **8.14 - 8.18 X 4.97 MM**

**GRADING RESULTS**

Carat Weight **2.04 CARATS**  
Color Grade **D**  
Clarity Grade **VVS 2**  
Cut Grade **IDEAL**

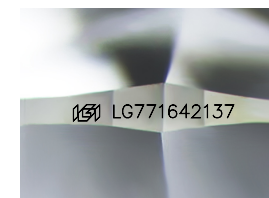


**ADDITIONAL GRADING INFORMATION**

Polish **EXCELLENT**  
Symmetry **EXCELLENT**  
Fluorescence **NONE**  
Inscription(s) **IGI LG771642137**  
Comments: This Laboratory Grown Diamond was created by Chemical Vapor Deposition (CVD) growth process. Type IIa

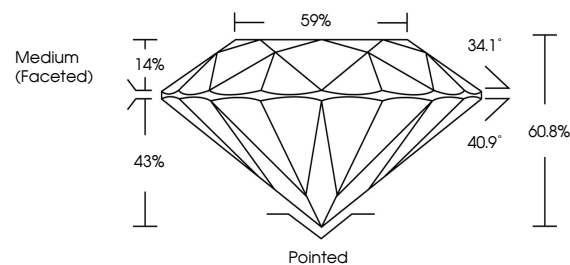


March 24, 2026  
IGI Report No LG771642137  
**ROUND BRILLIANT**  
8.14 - 8.18 X 4.97 MM  
2.04 CARATS  
D  
VVS 2  
IDEAL  
60.8%  
59%  
Medium (Faceted)  
Pointed  
EXCELLENT  
EXCELLENT  
NONE  
IGI LG771642137  
Comments: This Laboratory Grown Diamond was created by Chemical Vapor Deposition (CVD) growth process. Type IIa

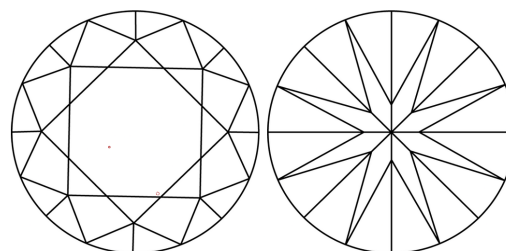


Sample Image Used

**PROPORTIONS**



**CLARITY CHARACTERISTICS**



**KEY TO SYMBOLS**

Red symbols indicate internal characteristics.  
Green symbols indicate external characteristics.

**COLOR**

D E F G H I J Faint Very Light Light

**CLARITY**

FL	IF	VVS <sup>1-2</sup>	VS <sup>1-2</sup>	SI <sup>1-2</sup>	I <sup>1-3</sup>
Flawless	Internally Flawless	Very Very Slightly Included	Very Slightly Included	Slightly Included	Included

