



ELECTRONIC COPY

LG771643275 Report verification at igi.org



April 2, 2026 IGI Report Number LG771643275 Description LABORATORY GROWN DIAMOND Shape and Cutting Style CUT CORNERED RECTANGULAR MODIFIED BRILLIANT Measurements 9.07 X 6.28 X 4.16 MM GRADING RESULTS Carat Weight 2.05 CARATS Color Grade G Clarity Grade VVS 2

April 2, 2026 IGI Report Number LG771643275 Description LABORATORY GROWN DIAMOND Shape and Cutting Style CUT CORNERED RECTANGULAR MODIFIED BRILLIANT Measurements 9.07 X 6.28 X 4.16 MM

GRADING RESULTS

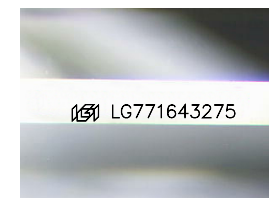
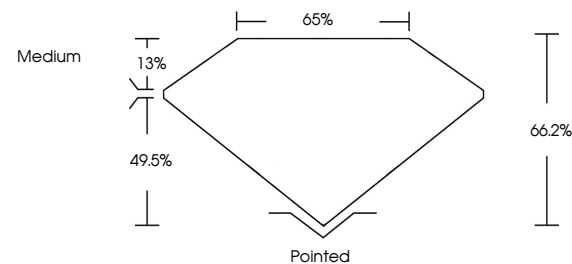
Carat Weight 2.05 CARATS Color Grade G Clarity Grade VVS 2

ADDITIONAL GRADING INFORMATION

Polish EXCELLENT Symmetry EXCELLENT Fluorescence NONE Inscription(s) LG771643275

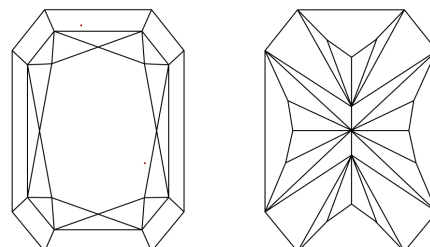
Comments: This Laboratory Grown Diamond was created by Chemical Vapor Deposition (CVD) growth process. Type IIa

PROPORTIONS



Sample Image Used

CLARITY CHARACTERISTICS



KEY TO SYMBOLS

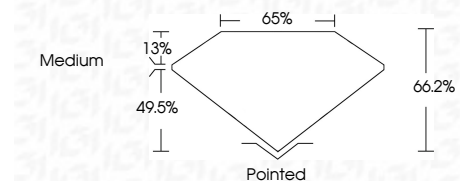
Red symbols indicate internal characteristics. Green symbols indicate external characteristics.

COLOR

D E F G H I J Faint Very Light Light

CLARITY

FL IF VVS 1-2 VS 1-2 SI 1-2 I 1-3 Flawless Internally Flawless Very Very Slightly Included Very Slightly Included Slightly Included Included



ADDITIONAL GRADING INFORMATION

Polish EXCELLENT Symmetry EXCELLENT Fluorescence NONE Inscription(s) LG771643275 Comments: This Laboratory Grown Diamond was created by Chemical Vapor Deposition (CVD) growth process. Type IIa



April 2, 2026 IGI Report No LG771643275 CUT CORNERED RECT. MODIFIED BRILLIANT 9.07 X 6.28 X 4.16 MM 2.05 CARATS G VVS 2 66.2% 65% Medium Pointed EXCELLENT EXCELLENT NONE LG771643275 Comments: This Laboratory Grown Diamond was created by Chemical Vapor Deposition (CVD) growth process. Type IIa