



**ELECTRONIC COPY**

LG771645825  
Report verification at igi.org



February 11, 2026  
IGI Report Number **LG771645825**  
Description **LABORATORY GROWN DIAMOND**  
Shape and Cutting Style **CUT CORNERED  
RECTANGULAR MODIFIED  
BRILLIANT**  
Measurements **7.99 X 5.64 X 3.82 MM**  
**GRADING RESULTS**  
Carat Weight **1.59 CARAT**  
Color Grade **FANCY YELLOW**  
Clarity Grade **VS 1**

February 11, 2026  
IGI Report Number **LG771645825**  
Description **LABORATORY GROWN DIAMOND**  
Shape and Cutting Style **CUT CORNERED RECTANGULAR  
MODIFIED BRILLIANT**  
Measurements **7.99 X 5.64 X 3.82 MM**

**GRADING RESULTS**

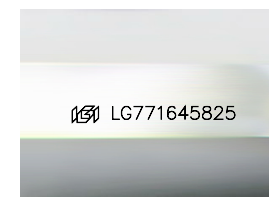
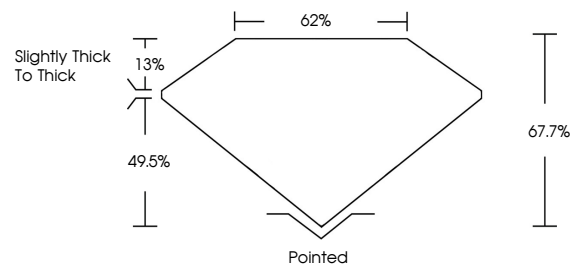
Carat Weight **1.59 CARAT**  
Color Grade **FANCY YELLOW**  
Clarity Grade **VS 1**

**ADDITIONAL GRADING INFORMATION**

Polish **EXCELLENT**  
Symmetry **EXCELLENT**  
Fluorescence **NONE**  
Inscription(s) **IGI LG771645825**

Comments: This Laboratory Grown Diamond was created by Chemical Vapor Deposition (CVD) growth process.

**PROPORTIONS**



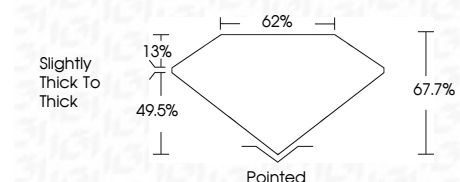
Sample Image Used

**COLOR**

D E F G H I J Faint Very Light Light

**CLARITY**

FL	IF	VS <sup>1-2</sup>	VS <sup>1-2</sup>	SI <sup>1-2</sup>	I <sup>1-3</sup>
Flawless	Internally Flawless	Very Very Slightly Included	Very Slightly Included	Slightly Included	Included



**ADDITIONAL GRADING INFORMATION**

Polish **EXCELLENT**  
Symmetry **EXCELLENT**  
Fluorescence **NONE**  
Inscription(s) **IGI LG771645825**  
Comments: This Laboratory Grown Diamond was created by Chemical Vapor Deposition (CVD) growth process.



February 11, 2026  
IGI Report No **LG771645825**  
**CUT CORNERED RECT. MODIFIED BRILLIANT**  
**7.99 X 5.64 X 3.82 MM**  
Carat Weight **1.59 CARAT**  
Color Grade **FANCY YELLOW**  
Clarity Grade **VS 1**  
Table **62%**  
Girdle **Slightly Thick To Thick**  
Culet **Pointed**  
Polish **EXCELLENT**  
Symmetry **EXCELLENT**  
Fluorescence **NONE**  
Inscription(s) **IGI LG771645825**  
Comments: This Laboratory Grown Diamond was created by Chemical Vapor Deposition (CVD) growth process.