



ELECTRONIC COPY

LG771652246
Report verification at igi.org



February 11, 2026
IGI Report Number **LG771652246**
Description **LABORATORY GROWN DIAMOND**
Shape and Cutting Style **CUT CORNERED
RECTANGULAR MODIFIED
BRILLIANT**
Measurements **11.30 X 7.78 X 4.74 MM**
GRADING RESULTS
Carat Weight **3.62 CARATS**
Color Grade **FANCY VIVID PINK**
Clarity Grade **VS 2**

February 11, 2026
IGI Report Number **LG771652246**
Description **LABORATORY GROWN DIAMOND**
Shape and Cutting Style **CUT CORNERED RECTANGULAR
MODIFIED BRILLIANT**
Measurements **11.30 X 7.78 X 4.74 MM**

GRADING RESULTS

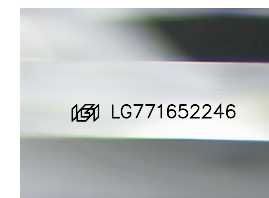
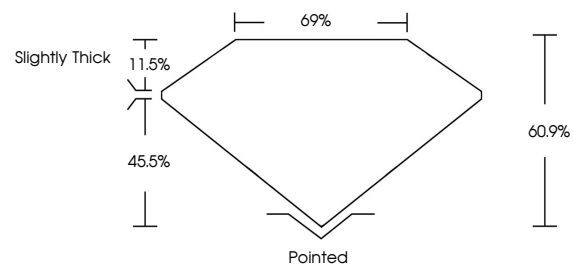
Carat Weight **3.62 CARATS**
Color Grade **FANCY VIVID PINK**
Clarity Grade **VS 2**

ADDITIONAL GRADING INFORMATION

Polish **EXCELLENT**
Symmetry **EXCELLENT**
Fluorescence **STRONG**
Inscription(s) **IGI LG771652246**

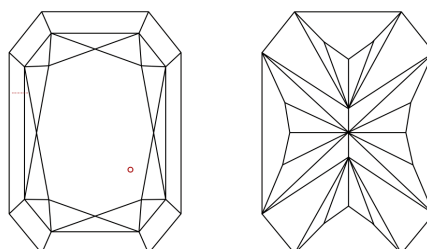
Comments: This Laboratory Grown Diamond was created by Chemical Vapor Deposition (CVD) growth process. Indications of post-growth treatment.

PROPORTIONS



Sample Image Used

CLARITY CHARACTERISTICS



KEY TO SYMBOLS

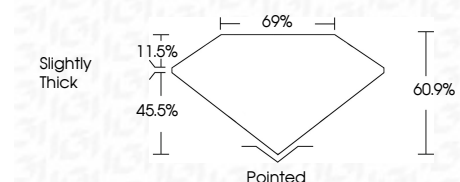
Red symbols indicate internal characteristics.
Green symbols indicate external characteristics.

COLOR

D E F G H I J Faint Very Light Light

CLARITY

FL	IF	VS ¹⁻²	VS ¹⁻²	SI ¹⁻²	I ¹⁻³
Flawless	Internally Flawless	Very Very Slightly Included	Very Slightly Included	Slightly Included	Included



ADDITIONAL GRADING INFORMATION

Polish **EXCELLENT**
Symmetry **EXCELLENT**
Fluorescence **STRONG**
Inscription(s) **IGI LG771652246**
Comments: This Laboratory Grown Diamond was created by Chemical Vapor Deposition (CVD) growth process. Indications of post-growth treatment.



February 11, 2026
IGI Report No LG771652246
CUT CORNERED RECT. MODIFIED BRILLIANT
11.30 X 7.78 X 4.74 MM
3.62 CARATS
FANCY VIVID PINK
VS 2
60.9%
69%
Slightly Thick
Pointed
EXCELLENT
EXCELLENT
STRONG
IGI LG771652246

Comments: This Laboratory Grown Diamond was created by Chemical Vapor Deposition (CVD) growth process. Indications of post-growth treatment.