



ELECTRONIC COPY

LG771656197
Report verification at igi.org



February 4, 2026

IGI Report Number **LG771656197**

Description **LABORATORY GROWN DIAMOND**

Shape and Cutting Style **CUT CORNERED
RECTANGULAR MODIFIED
BRILLIANT**

Measurements **11.03 X 7.89 X 5.39 MM**

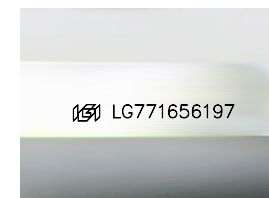
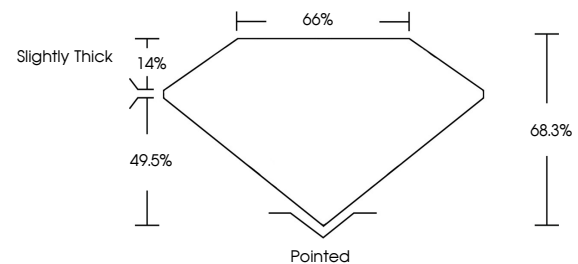
GRADING RESULTS

Carat Weight **4.10 CARATS**

Color Grade **D**

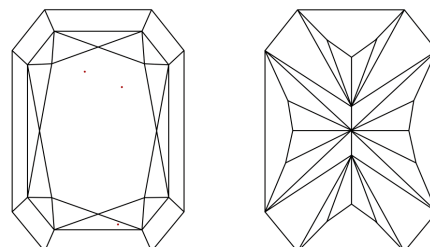
Clarity Grade **VVS 2**

PROPORTIONS



Sample Image Used

CLARITY CHARACTERISTICS



KEY TO SYMBOLS

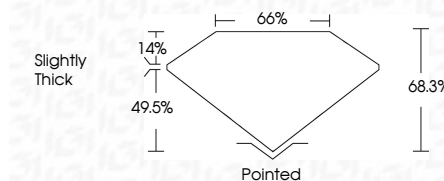
Red symbols indicate internal characteristics.
Green symbols indicate external characteristics.

COLOR

D E F G H I J Faint Very Light Light

CLARITY

FL	IF	VVS ¹⁻²	VS ¹⁻²	SI ¹⁻²	I ¹⁻³
Flawless	Internally Flawless	Very Very Slightly Included	Very Slightly Included	Slightly Included	Included



ADDITIONAL GRADING INFORMATION

Polish **EXCELLENT**

Symmetry **EXCELLENT**

Fluorescence **NONE**

Inscription(s) **IGI LG771656197**

Comments: This Laboratory Grown Diamond was created by Chemical Vapor Deposition (CVD) growth process. Type IIa



IGI



February 4, 2026
IGI Report No LG771656197
CUT CORNERED RECT. MODIFIED BRILLIANT

11.03 X 7.89 X 5.39 MM
4.10 CARATS
D
VVS 2
68.3%
49.5%
Slightly Thick

Pointed
EXCELLENT
EXCELLENT
NONE
IGI LG771656197

Comments: This Laboratory Grown Diamond was created by Chemical Vapor Deposition (CVD) growth process. Type IIa