



ELECTRONIC COPY

LG771661200
Report verification at igi.org



February 6, 2026

IGI Report Number **LG771661200**

Description **LABORATORY GROWN DIAMOND**

Shape and Cutting Style **ROUND BRILLIANT**

Measurements **8.04 - 8.09 X 4.99 MM**

GRADING RESULTS

Carat Weight **2.00 CARATS**

Color Grade **D**

Clarity Grade **VVS 2**

Cut Grade **IDEAL**

February 6, 2026
IGI Report Number **LG771661200**
Description **LABORATORY GROWN DIAMOND**
Shape and Cutting Style **ROUND BRILLIANT**
Measurements **8.04 - 8.09 X 4.99 MM**

GRADING RESULTS

Carat Weight **2.00 CARATS**

Color Grade **D**

Clarity Grade **VVS 2**

Cut Grade **IDEAL**

ADDITIONAL GRADING INFORMATION

Polish **EXCELLENT**

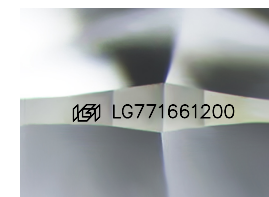
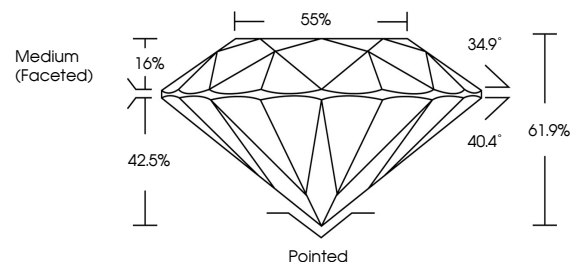
Symmetry **EXCELLENT**

Fluorescence **NONE**

Inscription(s) **IGI LG771661200**

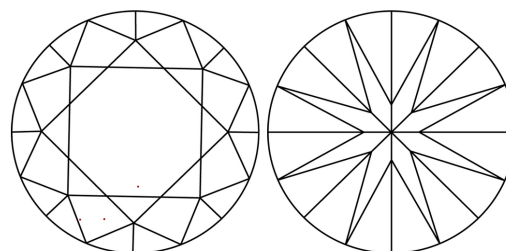
Comments: This Laboratory Grown Diamond was created by Chemical Vapor Deposition (CVD) growth process.
Type IIa

PROPORTIONS



Sample Image Used

CLARITY CHARACTERISTICS



KEY TO SYMBOLS

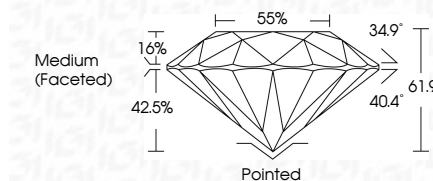
Red symbols indicate internal characteristics.
Green symbols indicate external characteristics.

COLOR

D E F G H I J Faint Very Light Light

CLARITY

FL	IF	VVS ¹⁻²	VS ¹⁻²	SI ¹⁻²	I ¹⁻³
Flawless	Internally Flawless	Very Very Slightly Included	Very Slightly Included	Slightly Included	Included



ADDITIONAL GRADING INFORMATION

Polish **EXCELLENT**

Symmetry **EXCELLENT**

Fluorescence **NONE**

Inscription(s) **IGI LG771661200**

Comments: This Laboratory Grown Diamond was created by Chemical Vapor Deposition (CVD) growth process.
Type IIa



IGI



February 6, 2026	IGI Report No LG771661200	2.00 CARATS	D	Pointed
8.04 - 8.09 X 4.99 MM	ROUND BRILLIANT	2.00 CARATS	VVS 2	EXCELLENT
Carat Weight	Color Grade	Clarity Grade	Depth	Symmetry
8.04 - 8.09 X 4.99 MM	D	VVS 2	61.9%	EXCELLENT
Color Grade	Cut Grade	Cut Grade	Table	Fluorescence
D	IDEAL	IDEAL	61.9%	NONE
Clarity Grade	Depth	Depth	Girdle	Inscription(s)
VVS 2	61.9%	61.9%	Medium (Faceted)	IGI LG771661200
IDEAL	61.9%	61.9%	Medium (Faceted)	
IDEAL	61.9%	61.9%	Medium (Faceted)	

Comments: This Laboratory Grown Diamond was created by Chemical Vapor Deposition (CVD) growth process.
Type IIa